

MPRC+

QUICKLY DEPLOYABLE CONVEYANCE SYSTEM

DETAILS

CONVEYING WIDTH: 36" OR 48"

The effective conveying width is determined by package size, available floor space, & application specific needs

CONVEYING ELEVATION: 24" - 48"

Standard conveying elevation is 32", but load & unload areas can be lower or higher as needed. Elevations higher & lower than this range can be achieved on a custom basis

LENGTH (STRAIGHT): 60" / 120"

The standard individual straight section is 120" long; these can be coupled together for runs of any length needed. Lengths other than the standard 60" & 120" are available on a custom basis but need to be divisible by the roller centers

DEGREE (CURVED): 30° / 45° / 60° / 90°

90° turns are standard on most systems, but 30°, 45°, & 60° turns are available as needed for special layout situations

PRODUCT DETAILS

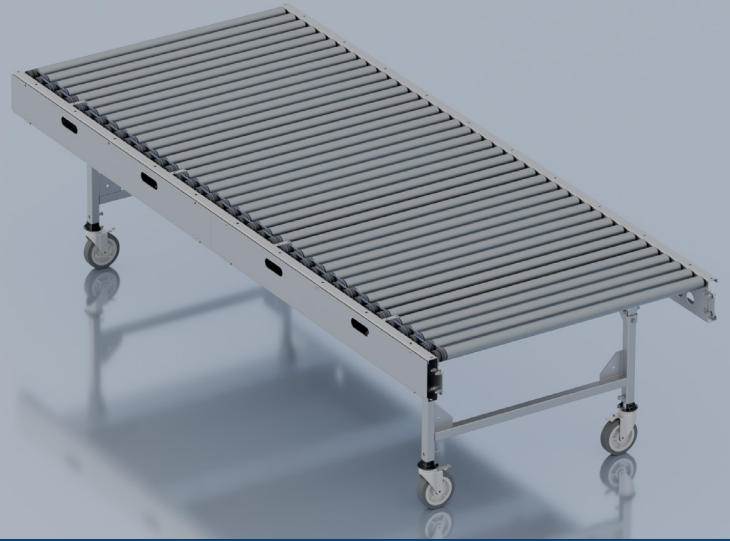
We developed an innovative modular conveyor system that is configurable, portable, quiet, durable, & cost-effective. Our Modular Portable Roller Conveyor Plus (MPRC+) system can connect in straight runs up to 80 feet with a single 110v power drop. The system can combine with powered curves to maneuver around existing equipment or building structures. Our configurable conveying system can provide you with the flexibility you need to manage ever-changing markets. What makes this stand out from our standard MPRC is the optional feature for close roller spacing, along with covered bands. Standard spacing is at a 2.1" roller center.

FEATURES & BENEFITS

- Prevents Wear & Tear
- Protects Operators
- Improved Durability, Lower Maintenance

WHAT IT CAN BE USED FOR

- Transportation
- Sortation
- Merging
- Dock Delivery
- Zone Accumulation
- Creating Gaps
- Parcel Fulfillment



MPRC

QUICKLY DEPLOYABLE CONVEYANCE SYSTEM

DETAILS

CONVEYING WIDTH: 36" OR 48"

The effective conveying width is determined by package size, available floor space, & application specific needs

CONVEYING ELEVATION: 24" - 48"

Standard conveying elevation is 32", but load & unload areas can be lower or higher as needed. Elevations higher & lower than this range can be achieved on a custom basis

LENGTH (STRAIGHT): 60" / 120"

The standard individual straight section is 120" long; these can be coupled together for runs of any length needed. Lengths other than the standard 60" & 120" are available on a custom basis but need to be divisible by the roller centers

DEGREE (CURVED): 30° / 45° / 60° / 90°

90° turns are standard on most systems, but 30°, 45°, & 60° turns are available as needed for special layout situations

PRODUCT DETAILS

Keeping up with the continually changing & ever-growing retail, e-commerce and distribution industries can be a daunting task as you strive to stay ahead of the pack. The traditional fixed positioned conveying systems are designed to carry out a single process, limiting flexibility required for ever-changing demand. We developed an innovative modular conveyor system that is configurable, portable, quiet, durable, & cost-effective. Our Modular Portable Roller Conveyor (MPRC) system can connect in straight runs up to 80 feet with a single 110v power drop. The system can combine with powered curves to maneuver around existing equipment or building structures. Our configurable conveying system can provide you with the flexibility you need to manage ever-changing markets.

FEATURES & BENEFITS

- Safe - No Guarding
- Portable
- Configurable/Re-Configurable
- 110v Single Phase Power Req.
- Reversible
- Variable Speed
- Close Roller Centers
- Fully assembled for Easy Installation
- Plug & Play
- Requires Minimal Spare Parts
- Smooth Operation
- Quiet

WHAT IT CAN BE USED FOR

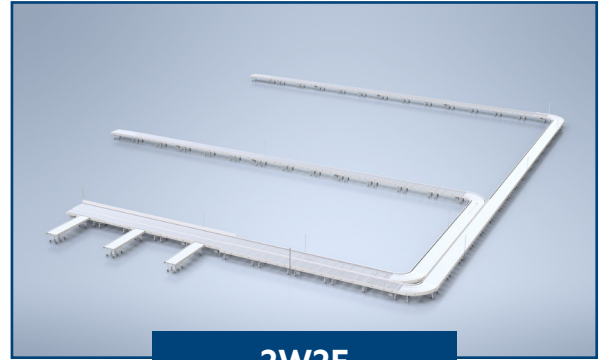
- Transportation
- Sortation
- Merging
- Dock Delivery
- Zone Accumulation
- Creating Gaps
- Parcel Fulfillment

MPRC+ SYSTEM LAYOUT



1W1F

A single-lane system with (1) runout for transport or sorting. Shown with (2) dock conveyors.



2W2F

A dual-lane system with (2) runouts for transport or sorting. Shown with (3) dock conveyors. Opportunity at dock to sort to the (2) destination runouts.



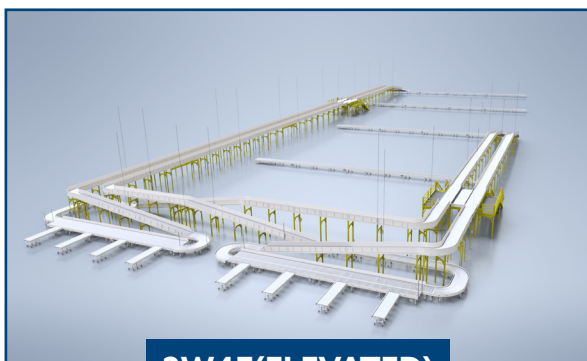
2W3F

A dual-lane system with (3) runouts for transport or sorting. Shown with (4) dock conveyors. Opportunity at dock sort to runout (1), or runouts (2) & (3). A sort position further downstream provides sorting to runout (2) or if unnamed product will travel to runout (3).



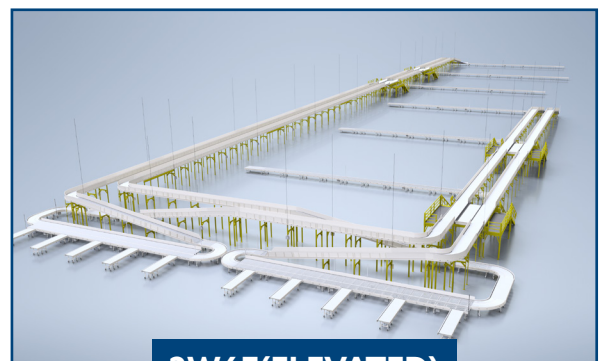
2W4F

A dual-lane system with (4) runouts for transport or sorting. Shown with (5) dock conveyors. Opportunity at dock sort to runouts (1) & (2), or runouts (3) & (4). Downstream sort positions provide sorting to first of (2) runouts, or if unnamed, product runs to last runout pair.



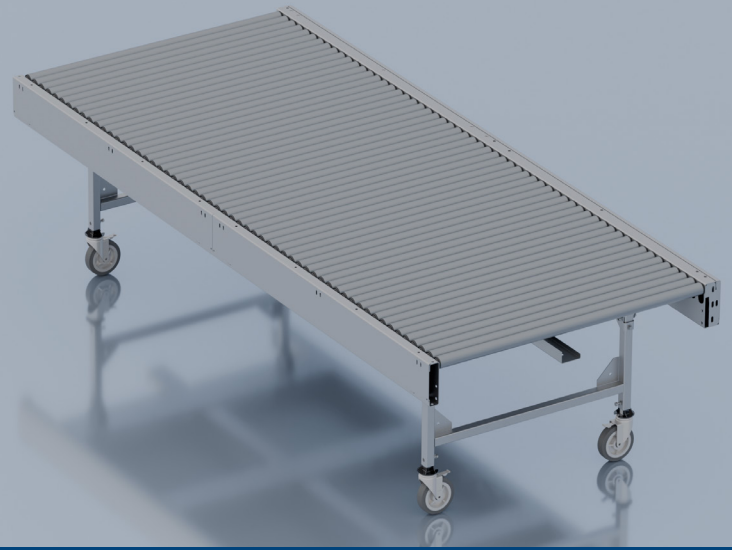
2W4F(ELEVATED)

A dual-lane system with (2) elevated sides of (2) lanes each. (4) runouts for transport or sorting. Shown with (8) dock conveyors. Opportunity at all dock positions to sort. One side feeds runouts (1) & (2), the other feeds runouts (3) & (4). If unnamed, product runs to last pair.



2W6F(ELEVATED)

A dual-lane system with (2) elevated sides of (2) lanes each. (6) runouts for transport or sorting. Shown with (10) dock conveyors. Opportunity at all dock positions to sort. One side feeds runouts (1) thru (3), the other feeds runouts (4) thru (6). If unnamed, product runs to last pair.



MPRC+ WITH CYBERLOGIQ

QUICKLY DEPLOYABLE CONVEYANCE SYSTEM

DETAILS

CONVEYING WIDTH: 36" OR 48"

The effective conveying width is determined by package size, available floor space, & application specific needs

CONVEYING ELEVATION: 24" - 48"

Standard conveying elevation is 32", but load & unload areas can be lower or higher as needed. Elevations higher & lower than this range can be achieved on a custom basis

LENGTH (STRAIGHT): 60" / 120"

The standard individual straight section is 120" long; these can be coupled together for runs of any length needed. Lengths other than the standard 60" & 120" are available on a custom basis but need to be divisible by the roller centers

DEGREE (CURVED): 30° / 45° / 60° / 90°

90° turns are standard on most systems, but 30°, 45°, & 60° turns are available as needed for special layout situations

PRODUCT DETAILS

We developed an innovative modular conveyor system that is configurable, portable, quiet, durable, & cost-effective. Our Modular Portable Roller Conveyor Plus (MPRC+) system can connect in straight runs up to 80 feet with a single 110v power drop. The system can combine with powered curves to maneuver around existing equipment or building structures. Our configurable conveying system can provide you with the flexibility you need to manage ever-changing markets. What makes this stand out from our standard MPRC is the optional feature for close roller spacing, along with covered bands. Standard spacing is at a 2.1" roller center.

CyberLogiQ isn't just a product—it's a flexible, intelligent solution built to adapt to your needs. Designed to integrate seamlessly with a variety of sensors, control cards and motors. CyberLogiQ optimizes conveyor operations like never before. With features like zoned accumulation, dynamic singulation, merging, and gapping control, it's the key to maximizing efficiency and throughput.

FEATURES & BENEFITS

- Prevents Wear & Tear
- Protects Operators
- Improved Durability, Lower Maintenance

WHAT IT CAN BE USED FOR

- Transportation
- Sortation
- Merging
- Dock Delivery
- Zone Accumulation
- Creating Gaps
- Parcel Fulfillment