

FLEX

EXTENDS, CONTRACTS, & ZIG-ZAGS FOR OUTBOUND/INBOUND PRODUCT FLOW

DETAILS

WIDTH: 18" / 24" / 30"

* Determined by package size, available conveying area & application-specific needs.

EXTENDED LENGTH: 12' to 80'

* Determined by total length needed, including curvatures & obstructions.

ELEVATION: 24" - 48" Fixed Height

SPEED: 20-150 FPM

ROLLER: 1.50" / 1.90" Diameter

* 16 ga wall tube with 5/16" cold rolled steel axles, spring retained. Standard bearings are ABEC precision, grease packed.

ROLLER CENTERS: 3" / 4" / 5" / 5 1/4"

DRIVE: Located on support structure between frames & between supports for zone accumulation.

MOTOR: 90 VDC, supplies up to 16 motors

POWER: 120 Volt, single phase, 60 hertz

FRAME: Steel zinc plated side links with all bolted construction, powder finish leg supports.

SUPPORT CENTERS: 6" / 8" Casters

WEIGHT CAPACITY: 100lbs per LFT

PRODUCT DETAILS

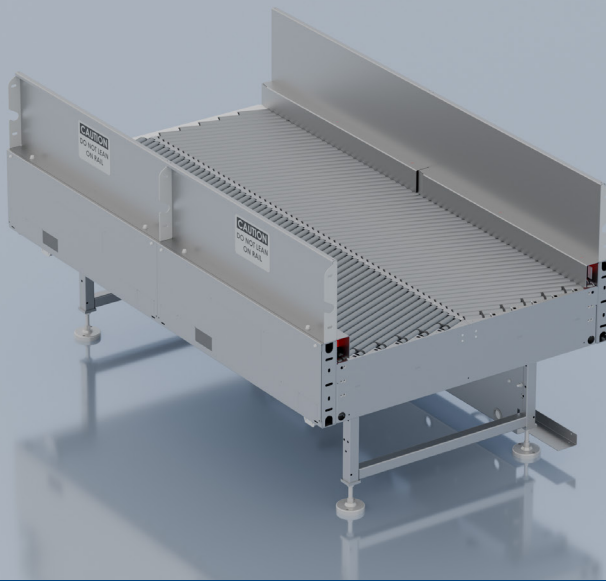
Keeping up with the continually changing and ever-growing retail, e-commerce and distribution industries can be a daunting task as you strive to stay ahead of the pack. The traditional fixed positioned conveying systems are designed to carry out a single process limiting flexibility required for ever-changing demand. We developed an innovative flexible conveyor system that is expandable, portable, quiet, durable, and cost-effective. Our Flexible Portable Roller Conveyor (FPRC) system can connect in runs up to 80 feet with a single 110V power drop. This versatile system can zig-zag to maneuver around existing equipment or building structures, allowing the creation of a temporary conveyor line to meet ever-changing needs. To complement this system, we developed an innovative powered assist drive to allow the operator to easily maneuver the conveyor line. Our flexible conveying system can provide you with the solution you need to manage ever-changing markets.

FEATURES & BENEFITS

- Safe – No Guarding
- Portable
- Configurable
- 110V Single Phase Power Req.
- Reversible
- Variable Speed
- Power Assist
- Fully Assembled for Easy Installation
- Plug & Play
- Requires Minimal Spare Parts
- Smooth Operation
- Quiet

WHAT IT CAN BE USED FOR

- Transportation
- Sortation
- Merging
- Dock Delivery
- Zone Accumulation
- Gapping
- Splitting
- Parcel Fulfillment



MERGE

CONSOLIDATION OF IRREGULARLY SHAPED PACKAGES TO A SINGLE LANE

DETAILS

WIDTH: 24" up to 84"

* Width is determined by package size, available conveying area, & application-specific needs.

LENGTH: 36" to 240"

ELEVATION: 24" to 120"

SPEED: Application-dependent. Individually controlled fixed speed zones at 25-350+ FPM.

ROLLER TYPES: 1.38" / 1.9" / 2.5" Standard

GALVANIZED ROLLER ANGLES:

1.38" Rollers = 20.7° / 18.6° / 16.4°

1.9" Rollers = 20.7° / 18.6° / 16.4°

2.5" Rollers = 20.2° / 18.5° / 16.8° / 15° / 13.2°

ROLLER CENTERS:

1.38" Rollers = 1.5" Roller Centers

1.9" Rollers = 2.25" Roller Centers

2.5" Rollers = 2.75" Roller Centers

FRAME: 1 2ga for 1.3" Rollers or 8ga for 2.5" Rollers

GUARDRAIL: Optional 2"-24" tall fixed guardrails.

MOTOR: ¾ HP through 2 HP inverter-duty with optional voltages available.

PRODUCT DETAILS

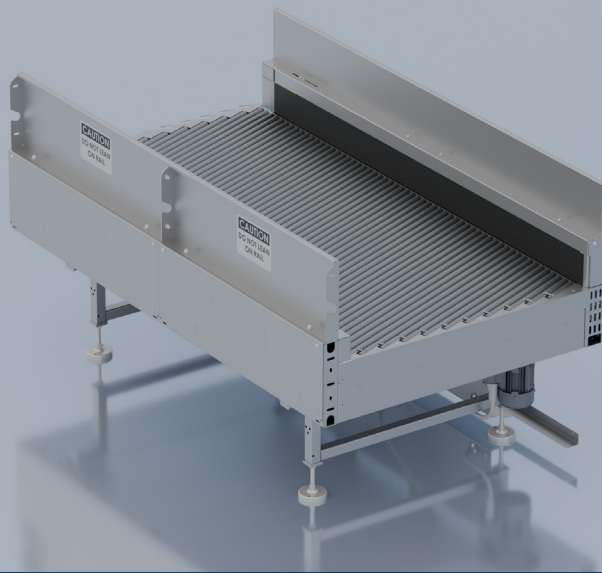
The LogistiQ Merge conveys packages from bulk flow or multiple lanes into a single file. This supports down stream activities like singulation, gapping, sortation, and/or re-direction. The rollers in multiple powered zones are driven by our patented Poly-V Hub cartridge bearings. The spring-loaded, tapered hex axles provide a snug fitment in the frame that helps minimize wear. With multiple angle options, the close roller centers effectively merge and center inbound packages of varying shapes and sizes.

FEATURES & BENEFITS

- Conveying Irregular Packages
- Quiet Operation at High Speed
- Can Help Achieve Singulation by Pairing with the LogistiQ Aligner.

WHAT IT CAN BE USED FOR

- Merging
- Singulation



ALIGNER

QUICKLY CONVEYS FROM MULTI LANE FLOW, JUSTIFIES INTO SINGLE LANE FLOW

DETAILS

LENGTH: 60" to 240" or longer.

ELEVATION: 24" to 120"

SPEED: Application-dependent. Individually controlled fixed speed zones at 25-350+ FPM.

ROLLER TYPE: 1.38" / 2.5" Stan. Galvanized Rollers.

ROLLER ANGLES:

1.38" Rollers = 20.7° / 18.6° / 16.4°

1.9" Rollers = 20.2° / 18.5° / 16.8° / 15° / 13.2°

2.5" Rollers = 20.2° / 18.5° / 16.8° / 15° / 13.2°

ROLLER CENTERS:

1.38" Rollers = 1.5" Roller Centers

1.9" Rollers = 2.25" Roller Centers

2.5" Rollers = 2.75" Roller Centers

FRAME: 12ga or 8ga

MOTOR: ¾ HP through 2 HP inverter duty with optional voltages available.

GUARDRAIL: 6" or 12" power face belt, or Durasurf covered guardrail.

PRODUCT DETAILS

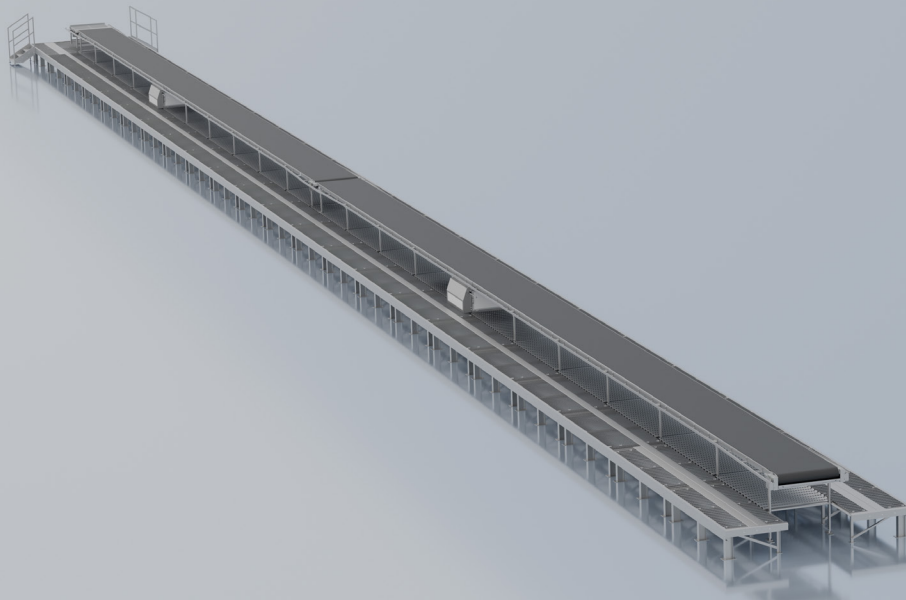
The LogistiQ Aligner justifies packages from bulk flow or multiple lanes into a right or left side edge. This supports down stream activities like singulation, gapping, sortation, or re-direction. The rollers in multiple powered zones are driven by our patented Poly-V Hub cartridge bearings. The spring loaded tapered hex axles provide a snug fitment in the frame that helps minimize wear. With multiple angle options, the close roller centers effectively align inbound packages of varying shapes and sizes. The optional vertical power face driven belt side rail helps to square packages prior to exiting the aligner.

FEATURES & BENEFITS

- Conveying Irregular Packages
- Quiet Operation at High Speed
- Can Help Achieve Singulation by Pairing with the LogistiQ Merge.

WHAT IT CAN BE USED FOR

- Aligning
- Singulation



VAN LINE X

QUICK PARCEL & PACKAGE LOADING & UNLOADING

DETAILS

BELT WIDTH: 48"

VARIABLE LENGTH PLATFORMS: Standard 5' or 10'

PLATFORM HEIGHT: 24"

BELT CONVEYOR HEIGHT: 54"

SPEED: As Required / Reversible

DRIVE: Motorized Pulley Drive upto 10 HP

FRAME: Ergo-Friendly Design, Powder Finish.

SUPPORTS: Pre-Welded, Heavy Duty.

PRODUCT DETAILS

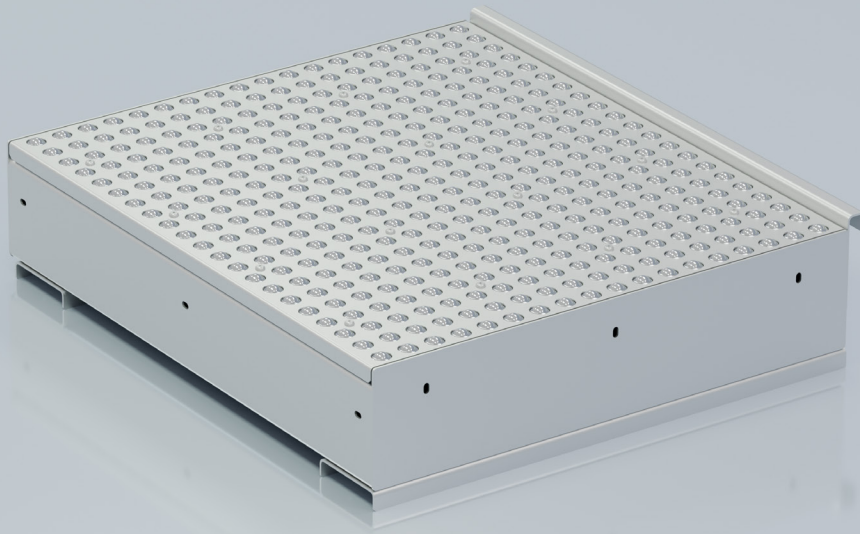
Van Line X is an innovative design intended to provide "Standardized" conveyor and platform modular components that are uniform in length, and assembled via well designed bolt together connections. The finished installation is 100% comparable to traditional Van Line installations that are often field fitted and welded together on site.

FEATURES & BENEFITS

- Common Size, Standardized Conveyor Components
- Shortens Installation Time by 30%!
- Ships in a Kitted Format for High Density Freight Consolidation.
- Built to End User Specifications.
- Shorter Engineering & Manufacturing Lead Times.

WHAT IT CAN BE USED FOR

- Intended for loading & unloading delivery vans, Van Line X is a direct interchange to traditional Van Line Conveyors & Work Platforms used in the parcel industry for years.



BALL TABLE

ALLOWS FOR EASE OF CONVEYANCE IN ANY DIRECTION

DETAILS

WIDTH: 9" up to 51"

* Width is determined by package size, available conveying area, & application-specific needs.

LENGTH: Up to 120"

ELEVATION: As required per application.

BALL CENTERS: 2", 3", 4", & 6"

BALL TYPES / CAPACITY PER BALL:

50 lbs. Steel
50 lbs. Nylon
65 lbs. Steel with Flange
75 lbs. Steel
75 lbs. Stainless Steel

FRAME STYLES: BPA, BPB, BPC, & DPD

PRODUCT DETAILS

The Ball Transfer Tables are used to manually rotate, reposition, or remove flat bottom products easily & efficiently. The BPA style is designed to be placed on an existing worktable, sort table, or cart. The BPB style is designed as a free-standing transfer table with smooth edges. The BPC style is built as a complete section that can be utilized as a free-standing unit or coupled to existing sections of gravity roller conveyor and are typically used as a transition or positioning areas within the line. The BPD style plates are designed to replace rollers in existing sections of gravity roller conveyors and are typically used as a transition or positioning area within the line.

FEATURES & BENEFITS

- Convey in Any Direction
- Conveying Irregular Packages
- Multiple Ball Types/Frames for Various Applications
- Minimal Spare Parts

WHAT IT CAN BE USED FOR

- Sortation
- Load Accumulation
- Side Loading
- Unloading
- Rotation



FINGER BRIDGE

CLOSING CONVEYANCE GAPS & MAINTAINING SAME SURFACE ELEVATION

DETAILS

WIDTH: 33" / 45"

* Width is determined by package size, available conveying area, & application-specific needs.

LENGTH, COLLAPSED: 87.5"

LENGTH, EXTENDED: 133.5"

OR

LENGTH, COLLAPSED: 99.5"

LENGTH, EXTENDED: 159".5

ROLLER CENTERS: 3"

ELEVATION: 33" + / - 3"

ROLLER TYPE: Standard Galvanized Roller options:

1.90" diameter, 12 ga. wall tube with 7/16" Hex cold rolled steel axles, spring retained.

2.5" diameter, 11 ga. wall tube with 11/16" Hex cold rolled steel axles, spring retained.

Standard bearings are Semi-precision

SUPPORTS: Heavy-Duty Leg Supports

Heavy-duty swivel caster with wheel lock (discharge end only). Self-tracking extension & retraction.

PRODUCT DETAILS

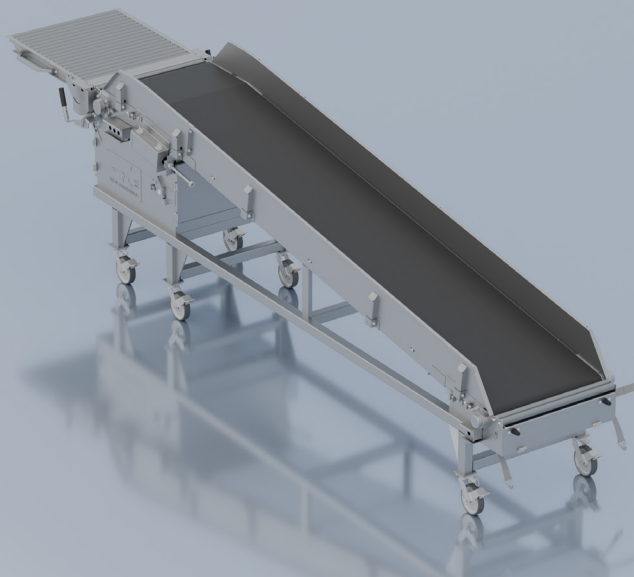
Many sorting facilities have multiple docks for receiving and loading packages to and from trailers. As sorting facilities with multiple docks, the need for an aisle way along the collector conveyors poses ergonomic challenges. To address this, we developed our Finger Bridge—as an extendable solution that closes the surface gap. The retractable fingers, with heavy-duty rollers, create a level surface, eliminating the safety concern of lifting heavy packages over the gap. Operators can efficiently sort packages negating the need for the associate to lift, therefore allowing them to quickly close the unit for egress if needed. The multi-lane design allows easy package orientation for seamless flow onto inbound/outbound conveyors, earning appreciation from operators for its ergonomic benefits.

FEATURES & BENEFITS

- Extendable Conveyor that maintains same surface elevation.
- Allows for easy egress to aisle ways with extendable fingers.
- Due to construction, provides easy maneuverability for all package sizes.
- Multi Lane Gravity Roller Conveyor; 1.9 12g rollers on 2.25 centers.
- Swivel lock casters allow for easy extending.
- Heavy Duty impact pan to protect the conveyor in robust handling applications.

WHAT IT CAN BE USED FOR

- Dock Doors
- Aisle Ways
- Large Package Handling
- Egress in Lieu of Cross-Over/Stairways



T-SORT BELT

EASY TO USE WHEN UNLOADING NON-CONFORMING PRODUCTS

DETAILS

BELT WIDTH: 35.5"

LENGTH WITHOUT CHUTE: 192"

LENGTH WITH CHUTE: 288.25"

ELEVATION IN-FEED: 31"

ELEVATION DISCHARGE: 54"

SPEED: 60 FPM, Variable Speed

DRIVE: 1 HP motorized pulley, reversible located within frame.

MOTOR: 1 HP, Inverter Duty, Reversible

GUARD RAIL: Removable

SUPPORTS: Heavy-duty Leg supports with swivel caster & wheel locks.

PRODUCT DETAILS

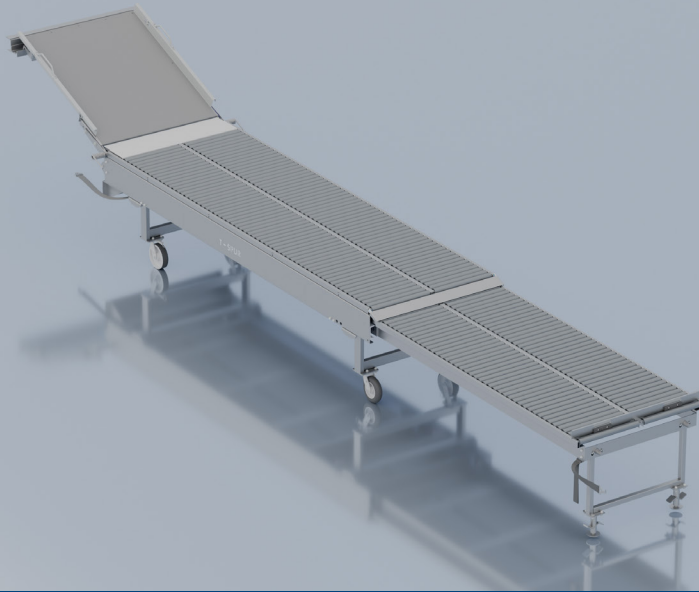
We developed a Portable T-Sort Powered Belt Conveyor with a mating portable gravity section designed for mobility. This heavy duty unit is remarkably easy to move, and offers a simple and effective means to handle difficult to convey products in sorting, loading, or unloading applications. The UHMW lined Chute provides a low friction surface at interface points, allowing operators to easily transfer these challenging items on or off the adjoining surfaces. The unit is driven with a 2 HP reversible motorized pulley that uses 115V, 1ph power. Its 20 ft long power cord is supplied with a twist lock plug that stays put. This conveyor is a multi-use unit that is easily deployed for whatever your special use needs might be.

FEATURES & BENEFITS

- Reversible Incline/Decline
- Lift Gate for Egress Access
- 115V Single Phase Power
- Variable Speed
- Removable Side Rails for Oversized Package.
- Optional Gravity Roller In-Feed Conveyor.
- Plug & Play Electrical Connections.
- 8" Offset Heavy-Duty Swivel Locking Casters Allow for Easy Maneuvering.

WHAT IT CAN BE USED FOR

- Manual Sort Operations
- Loading & Unloading Transport Vehicles



T-SORT ROLLER

EXPANDING & CONTRACTING NEEDS AT LOADING DOCK

DETAILS

WIDTH BETWEEN FRAMES: 42"

LENGTH, COLLAPSED: 144"

STANDARD LENGTH, EXTENDED: Standard 240"

* Self-tracking extension & retraction.

PIVOTING LENGTH, EXTENDED: Chute 288.25"

CHUTE: UHMW Lined

ELEVATION: 33" +/- 3"

ROLLER TYPE: 1.90" Dia, 12ga Galvanized Rollers

ROLLER CENTERS: 2.25"

FRAME: Ergo-friendly design, powder finish

SUPPORTS: Heavy-duty supports & swivel caster with wheel lock (discharge end only).

PRODUCT DETAILS

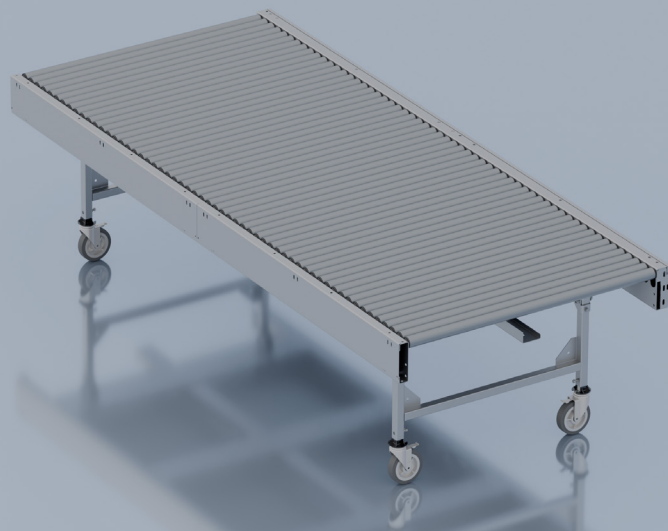
We developed the Portable T-Sort Roller Conveyor to support customers in quickly expanding their existing manual sort capabilities. Its flexible features allow operators to easily move the large 12 ft long portable conveyor components to a desired location, lock them in place, and extend their length to 20 feet. Multiple segments can achieve as much as 60 feet total extended lengths! The spring loaded chute on the base section is lined with UHMW and can be tilted to connect to an adjoining conveyor at 90 degrees, this then offers a low friction sorting surface to the newly created conveyor lane. Customers have reported significant increases in productivity related to the deployment of these relatively low cost units to existing operations without the need for disruptive, and expensive system expansions.

FEATURES & BENEFITS

- Available in (3) 20 ft Extendable Mating Sections.
- 8" Offset Heavy-Duty Swivel Locking Casters allow for Easy Maneuvering.
- Torsion Spring Loaded Pivoting Chute
- Dual Lane 1.9 16g Rollers on 2.25 Centers
- Easy In & Out Extension

WHAT IT CAN BE USED FOR

- Manual Sort Operations
- Loading & Unloading Transport Vehicles



MPRC+

QUICKLY DEPLOYABLE CONVEYANCE SYSTEM

DETAILS

CONVEYING WIDTH: 36" OR 48"

The effective conveying width is determined by package size, available floor space, & application specific needs.

CONVEYING ELEVATION: 24" - 48"

Standard conveying elevation is 32", but load & unload areas can be lower or higher as needed. Elevations higher & lower than this range can be achieved on a custom basis.

LENGTH (STRAIGHT): 60" / 120"

The standard individual straight section is 120" long; these can be coupled together for runs of any length needed. Lengths other than the standard 60" & 120" are available on a custom basis but need to be divisible by the roller centers.

DEGREE (CURVED): 30° / 45° / 60° / 90°

90° turns are standard on most systems, but 30°, 45°, & 60° turns are available as needed for special layout situations.

PRODUCT DETAILS

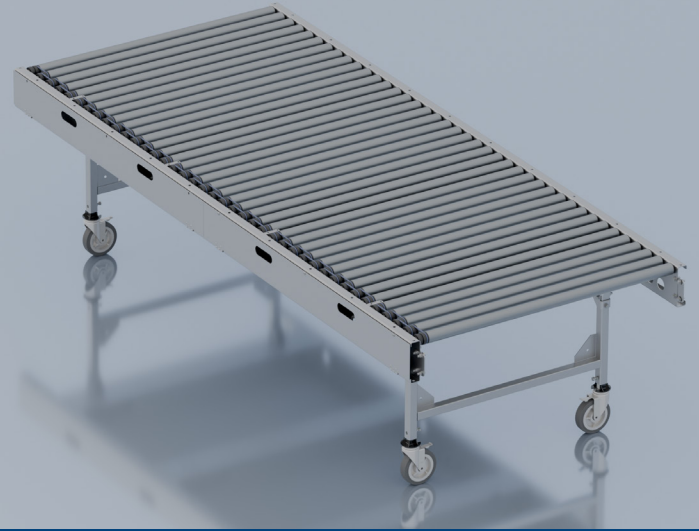
We developed an innovative modular conveyor system that is configurable, portable, quiet, durable, and cost-effective. Our Modular Portable Roller Conveyor Plus (MPRC+) system can connect in straight runs up to 80 feet with a single 110V power drop. The system can combine with powered curves to maneuver around existing equipment or building structures. Our configurable conveying system can provide you with the flexibility you need to manage ever-changing markets. What makes this stand out from our standard MPRC is the optional feature for close roller spacing, along with covered bands. Standard spacing is at a 2.1" roller center.

FEATURES & BENEFITS

- Prevents Wear & Tear
- Protects Operators
- Improved Durability, Lower Maintenance

WHAT IT CAN BE USED FOR

- Transportation
- Sortation
- Merging
- Dock Delivery
- Zone Accumulation
- Creating Gaps
- Parcel Fulfillment



MPRC

QUICKLY DEPLOYABLE CONVEYANCE SYSTEM

DETAILS

CONVEYING WIDTH: 36" OR 48"

The effective conveying width is determined by package size, available floor space, & application specific needs.

CONVEYING ELEVATION: 24" - 48"

Standard conveying elevation is 32", but load & unload areas can be lower or higher as needed. Elevations higher & lower than this range can be achieved on a custom basis.

LENGTH (STRAIGHT): 60" / 120"

The standard individual straight section is 120" long; these can be coupled together for runs of any length needed. Lengths other than the standard 60" & 120" are available on a custom basis but need to be divisible by the roller centers.

DEGREE (CURVED): 30° / 45° / 60° / 90°

90° turns are standard on most systems, but 30°, 45°, & 60° turns are available as needed for special layout situations.

PRODUCT DETAILS

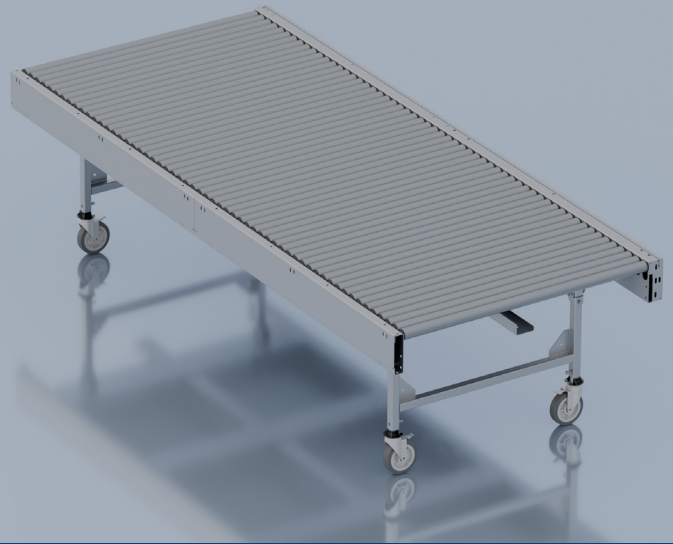
Keeping up with the continually changing and ever-growing retail, e-commerce and distribution industries can be a daunting task as you strive to stay ahead of the pack. The traditional fixed positioned conveying systems are designed to carry out a single process, limiting flexibility required for ever-changing demand. We developed an innovative modular conveyor system that is configurable, portable, quiet, durable, and cost-effective. Our Modular Portable Roller Conveyor (MPRC) system can connect in straight runs up to 80 feet with a single 110V power drop. The system can combine with powered curves to maneuver around existing equipment or building structures. Our configurable conveying system can provide you with the flexibility you need to manage ever-changing markets.

FEATURES & BENEFITS

- Safe - No Guarding
- Portable
- Configurable/Re-Configurable
- 110V Single Phase Power Req.
- Reversible
- Variable Speed
- Close Roller Centers
- Fully Assembled for Easy Installation
- Plug & Play
- Requires Minimal Spare Parts
- Smooth Operation
- Quiet

WHAT IT CAN BE USED FOR

- Transportation
- Sortation
- Merging
- Dock Delivery
- Zone Accumulation
- Creating Gaps
- Parcel Fulfillment



MPRC+ WITH CYBERLOGIQ

QUICKLY DEPLOYABLE CONVEYANCE SYSTEM

DETAILS

CONVEYING WIDTH: 36" OR 48"

The effective conveying width is determined by package size, available floor space, & application specific needs.

CONVEYING ELEVATION: 24" - 48"

Standard conveying elevation is 32", but load & unload areas can be lower or higher as needed. Elevations higher & lower than this range can be achieved on a custom basis.

LENGTH (STRAIGHT): 60" / 120"

The standard individual straight section is 120" long; these can be coupled together for runs of any length needed. Lengths other than the standard 60" & 120" are available on a custom basis but need to be divisible by the roller centers.

DEGREE (CURVED): 30° / 45° / 60° / 90°

90° turns are standard on most systems, but 30°, 45°, & 60° turns are available as needed for special layout situations.

PRODUCT DETAILS

We developed an innovative modular conveyor system that is configurable, portable, quiet, durable, and cost-effective. Our Modular Portable Roller Conveyor Plus (MPRC+) system can connect in straight runs up to 80 feet with a single 110V power drop. The system can combine with powered curves to maneuver around existing equipment or building structures. Our configurable conveying system can provide you with the flexibility you need to manage ever-changing markets. What makes this stand out from our standard MPRC is the optional feature for close roller spacing, along with covered bands. Standard spacing is at a 2.1" roller center.

CyberLogiQ isn't just a product—it's a flexible, intelligent solution built to adapt to your needs. Designed to integrate seamlessly with a variety of sensors, control cards and motors. CyberLogiQ optimizes conveyor operations like never before. With features like zoned accumulation, dynamic singulation, merging, and gapping control, it's the key to maximizing efficiency and throughput.

FEATURES & BENEFITS

- Prevents Wear & Tear
- Protects Operators
- Improved Durability, Lower Maintenance

WHAT IT CAN BE USED FOR

- Transportation
- Sortation
- Merging
- Dock Delivery
- Zone Accumulation
- Creating Gaps
- Parcel Fulfillment



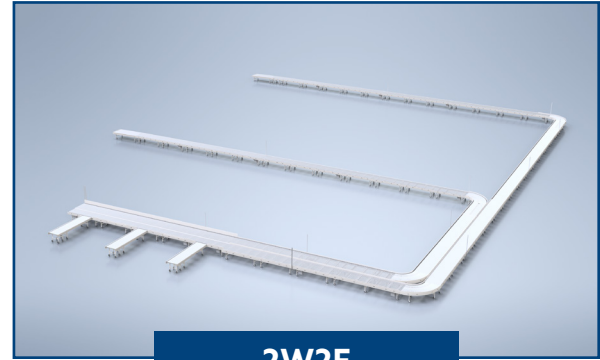
* The design and technology of this product are the proprietary property of LogistiQ and may be covered by one or more patents or pending patent applications.

MPRC+ SYSTEM LAYOUT



1W1F

A single-lane system with (1) runout for transport or sorting. Shown with (2) dock conveyors.



2W2F

A dual-lane system with (2) runouts for transport or sorting. Shown with (3) dock conveyors. Opportunity at dock to sort to the (2) destination runouts.



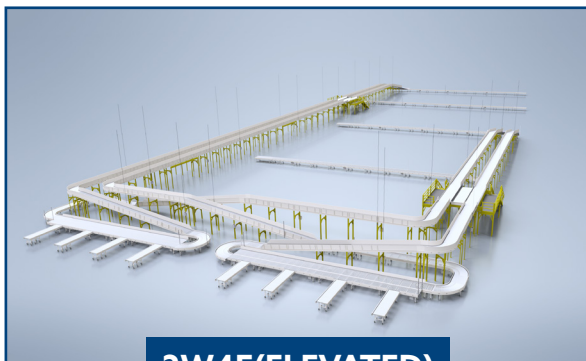
2W3F

A dual-lane system with (3) runouts for transport or sorting. Shown with (4) dock conveyors. Opportunity at dock sort to runout (1), or runouts (2) & (3). A sort position further downstream provides sorting to runout (2) or if unnamed product will travel to runout (3).



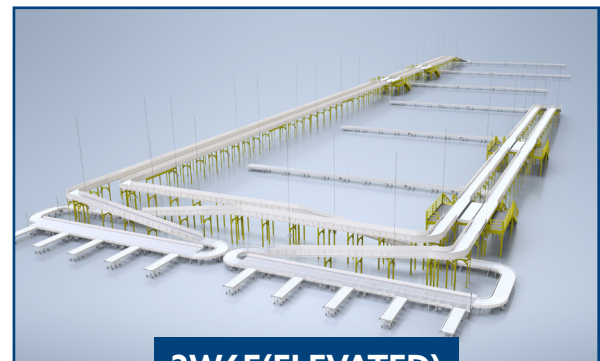
2W4F

A dual-lane system with (4) runouts for transport or sorting. Shown with (5) dock conveyors. Opportunity at dock sort to runouts (1) & (2), or runouts (3) & (4). Downstream sort positions provide sorting to first of (2) runouts, or if unnamed, product runs to last runout pair.



2W4F(ELEVATED)

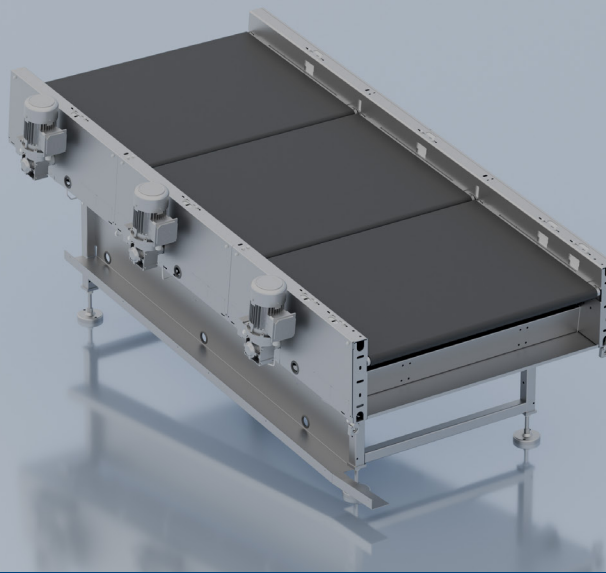
A dual-lane system with (2) elevated sides of (2) lanes each. (4) runouts for transport or sorting. Shown with (8) dock conveyors. Opportunity at all dock positions to sort. One side feeds runouts (1) & (2), the other feeds runouts (3) & (4). If unnamed, product runs to last pair.



2W6F(ELEVATED)

A dual-lane system with (2) elevated sides of (2) lanes each. (6) runouts for transport or sorting. Shown with (10) dock conveyors. Opportunity at all dock positions to sort. One side feeds runouts (1) thru (3), the other feeds runouts (4) thru (6). If unnamed, product runs to last pair.

* The design and technology of this product are the proprietary property of LogistiQ and may be covered by one or more patents or pending patent applications.



GAPPER

MULTI-SECTION BELT CONVEYOR THAT CREATES SPACE BETWEEN PACKAGES

DETAILS

WIDTH: Application Dependent

* Width is determined by package size, available conveying area, & application-specific needs.

BELT WIDTH: Application Dependent

LENGTH: Application Dependent

SPEED: Variable FPM

FRAME: Frame: 8ga, 12 ga Slider Bed.

MOTOR: AC or DC

FRAME: Ergo-friendly design, powder finish.

GUARDRAIL: 4" Both Sides

ELEVATION: Variable, Standard 32" to 48".

PRODUCT DETAILS

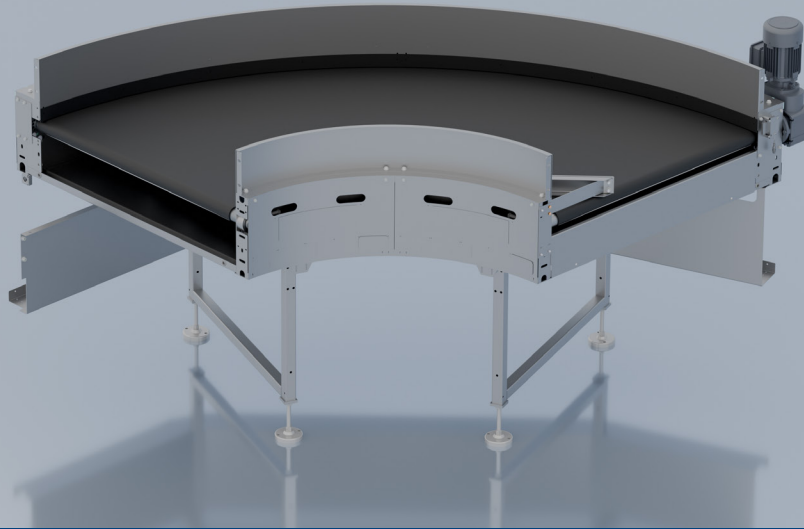
The Gapper is a multi-section conveyor that is used to create gap spacing between packages during automated sortation. This helps to facilitate the scanning, weighing, and sorting of items. This conveyor is specifically designed to support down-stream functions. With a single 480V speed control box per section allowing you to adjust speeds where needed.

FEATURES & BENEFITS

- Static Gapping
- Dynamic Gapping
- Support Downstream Functions

WHAT IT CAN BE USED FOR

- Sortation
- Product Sizing
- Scanning
- Weighing
- Product Separation



BELT CURVE

EFFECTIVE DIRECTIONAL CHANGE OF PACKAGES

DETAILS

BELT WIDTH: Up to 60"

* Width is determined by package size, available conveying area, & application-specific needs.

SPEED: Variable FPM

FRAME: 10GA, 16" deep

MOTOR: Application Dependent

GUARDRAIL: Optional

ELEVATION: 32" / 48" Standard

ARC: 45° / 90° / 180°

PRODUCT DETAILS

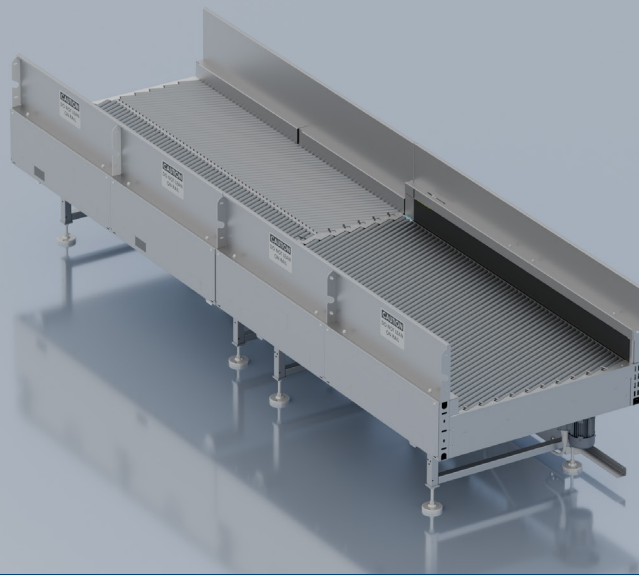
We developed our Belt Curve to effectively change application direction for packages that are routinely handled on belt conveyors. Various radiuses available to meet specific needs.

FEATURES & BENEFITS

- Smooth Product Transfers
- Low Noise
- Durable Construction

WHAT IT CAN BE USED FOR

- Help with Facilitation of Various Building Layouts
- Directional Changes for Products Handled on Belt Conveyors
- Maintaining Product Orientation, Directionally
- Handling of Irregularly Shaped Products



LOGISTIQ SMALL PACKAGE SINGULATOR

CONVERTS BULK FLOW PACKAGES INTO SINGLE FILE FLOW

DETAILS

LENGTH:

- **ALIGNER:** 60" - 240"
- **MERGE:** 36" - 240"

ELEVATION:

SPEED: Application-Dependent

ROLLER TYPE: 1.38", 1.9" 2.5" Stan. Galvanized

ROLLER ANGLES: See Merge & Aligner sheet.

ROLLER CENTERS: See Merge & Aligner sheet.

FRAME: 12ga or 8ga

MOTOR: ½ HP through 2 HP inverter duty with optional voltages available.

GUARDRAIL:

- **ALIGNER:** 2" - 24"
- **MERGE:** 6" or 12" power face belt, or Durasurf covered guardrail

WIDTH:

- **ALIGNER:** 24" - 48"
- **MERGE:** 36" - 84"

ALIGNER VERTICAL BELT: 6" & 12" wide

PRODUCT DETAILS

The LogistiQ Small Package Singulator, with 9 individually and dynamic controlled speed zones, conveys packages from bulk flow or multiple lanes in to a single file flow, where the packages will then be aligned to the left or the right side prior to discharge, on the downstream gapping conveyor.

The rollers in multiple powered zones are driven by Poly-V belts using our patented Poly-V cartridge bearing hub. The spring loaded tapered hex axles provide a snug fitment in the frame that helps minimize wear. With multiple angle options, the close roller centers effectively align inbound packages of a variety of shapes and sizes. The optional vertical power face driven belt side rail helps to square packages prior to exiting the Singulator.

FEATURES & BENEFITS

- Close Roller Spacing Accommodates Irregular Packages.
- Extremely Quiet Operation at Speeds of 650 FPM per min. or more.
- Designed with Ease of Maintenance in mind.

WHAT IT CAN BE USED FOR

- Used to singulate packages for sorting applications via merging, aligning.

MATERIAL TO BE HANDLED

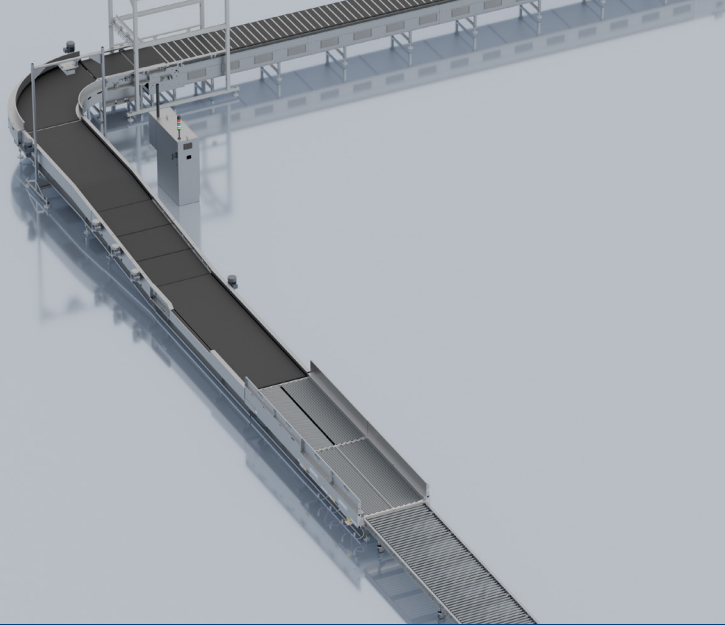
HEIGHT: Min 0.5" Max 26"

LENGTH: Min 6" Max 42"

WIDTH: Min 4" Max 33"

WEIGHT: Max 50lbs.

* The design and technology of this product are the proprietary property of LogistiQ and may be covered by one or more patents or pending patent applications.



THE LOGISTIQ SORTATION SYSTEM

SINGULATES, GAPS, SCANS, & SORTS

DETAILS

LENGTH: Application Dependent

HEIGHT: 32" - 48"

- **ERGONOMIC HEIGHT:** 32"

WIDTH: Application Dependent

RANGE OF GAPPING: 4" Minimum

MATERIAL TO BE HANDLED:

BOX:

- **HEIGHT:** Min 0.5" Max 26"
- **LENGTH:** Min 4" Max 42"
- **WIDTH:** Min 3" Max 33"

NON-BOX:

- **HEIGHT:** Min 0.12" Max 5"
- **LENGTH:** Min 4" Max: 16"
- **WIDTH:** Min 3" Max 13"
- **WEIGHT:** Max 50lbs.

*EQUIPMENT INCLUDED:

Mechlite, Gapper, Singulator

**Will integrate with Sorters.

PRODUCT DETAILS

The LogistiQ Sortation System takes bulk package flow and sorts to individual bins with minimal associate interaction. The modular design allows for features to be added or removed as necessary for the application.

The system consists of a Singulator to condition the packages into a single file line that is aligned to one side. These packages pass through a problem solving workstation where an associate eliminates shingled and stacked packages. After passing through the StreamLine+, that is operator monitored, the Gapping belt ensures that a 4" gap is created between each package. Each package is scanned to identify the destination sort location. The packages progress down a sorter to the desired destination where they are diverted into a specific Automatic Storage Device. Operators man the Automatic Diverting Device to unload packages to their delivery location. Packages that don't sort progress to a collection area.

FEATURES & BENEFITS

- Can handle a wide variety of package types from boxes to poly bags.
- Modular design allows it to fit in any configuration.
- Designed to handle 5500PPH.
- Runs quietly and safely to allow associates around the system.
- Centralized controls on one control panel.
- Singulation to end of scan in under 48'.

WHAT IT CAN BE USED FOR

- Last Mile Sortation
- Like Package Grouping
- Singulation: Turn bulk package flow into aligned even flow.
- Gapping: Space out aligned packages.
- Scanning: Bar code reading.



* The design and technology of this product are the proprietary property of LogistiQ and may be covered by one or more patents or pending patent applications.



AUTOMATIC STORAGE DEVICE

ACCUMULATES DIVERTED PACKAGES & RAISES TO ERGONOMIC PICK HEIGHT

DETAILS

BELT MAX VOLUME: 40+ Cubic Foot

MAX LOAD RATING: 500lbs

WIDTH: 94"

DEPTH: 45"

HEIGHT OVER ALL: 56"

* Note standard size. Custom sizes available per application.

PRODUCT DETAILS

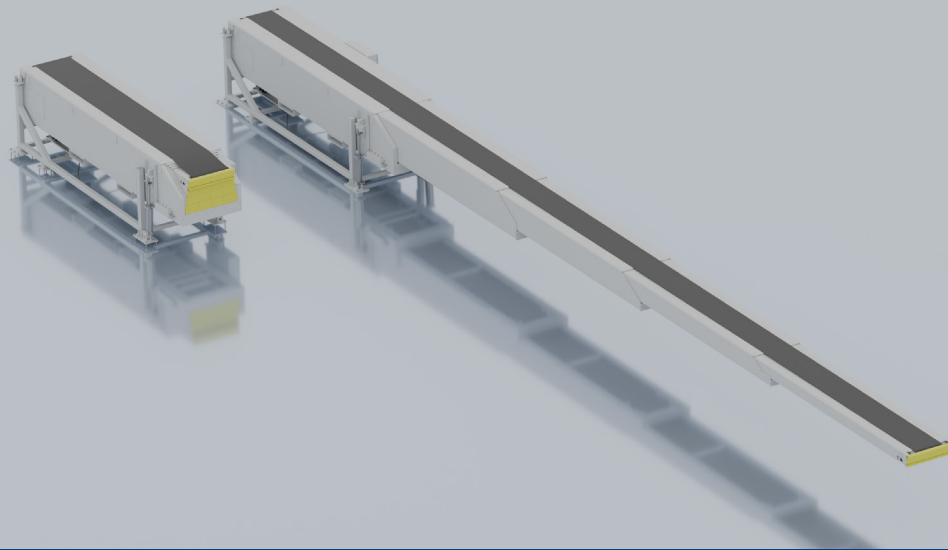
The LogistiQ Automatic Storage Device is designed to receive packages that come from a sorter, for example a Vertical Cross Belt Sorter. With the use of a low friction and impact resistant belt that will automatically raise and lower based on the incoming packages. This allows for the ability to maintain an optimal ergonomic pick height for an associate. The attached chute is covered with a low friction UHMW and is adjustable to select degree modification to maintain package speed as it enters the ASD belting. This assists in the automation process, in moving packages to the next location.

FEATURES & BENEFITS

- Designated Space for Packages
- Aids in Sortation for Shipping
- Low Noise
- Durable Construction
- Ergonomic Storage Buffer
- Designed for fast installation and ease of maintenance.
- Incoming package arrival safety lights alert operators of inbound products.
- Accumulation for destination packages.

WHAT IT CAN BE USED FOR

- Final automated sortation before loading a truck.
- Holds variety of package and mailer sizes and weights.
- Final last mile automation for routine sorting.
- Improved ergonomics for package sorting.



TELESCOPING BOOM CONVEYOR

EXTENDABLE UNLOADER WITH FOUR BOOMS FOR HANDLING PACKAGES

DETAILS

EXTENDED LENGTH: 70'-6"

RETRACTED LENGTH: 18'-9 1/2"

BASE WIDTH: ~4'

BELT WIDTH: 21"

INFEED ELEVATION: 1'-3 1/4" to 5'6"

BOOM TRAVEL SPEED: 40FPM

BELT SPEED: 50, 80, and 100FPM

BELT DRIVE: 3HP Drum Motor

CHAIN DRIVE: 1 1/2 HP Geared Motor

HYDRAULIC POWERPACK MOTOR: 3HP

LOAD: 50lbs/ft + 250lb at the tip

PRODUCT DETAILS

Telescopic Boom Conveyors are designed for efficient material handling, featuring hydraulic cylinders for smooth lifting and lowering. Our Telescopic Boom Conveyor has four synchronously extendable booms, with a robust base for durability and stability in industrial environments. It is equipped with safety bumpers at the loading area to prevent damage in presence of obstacle.

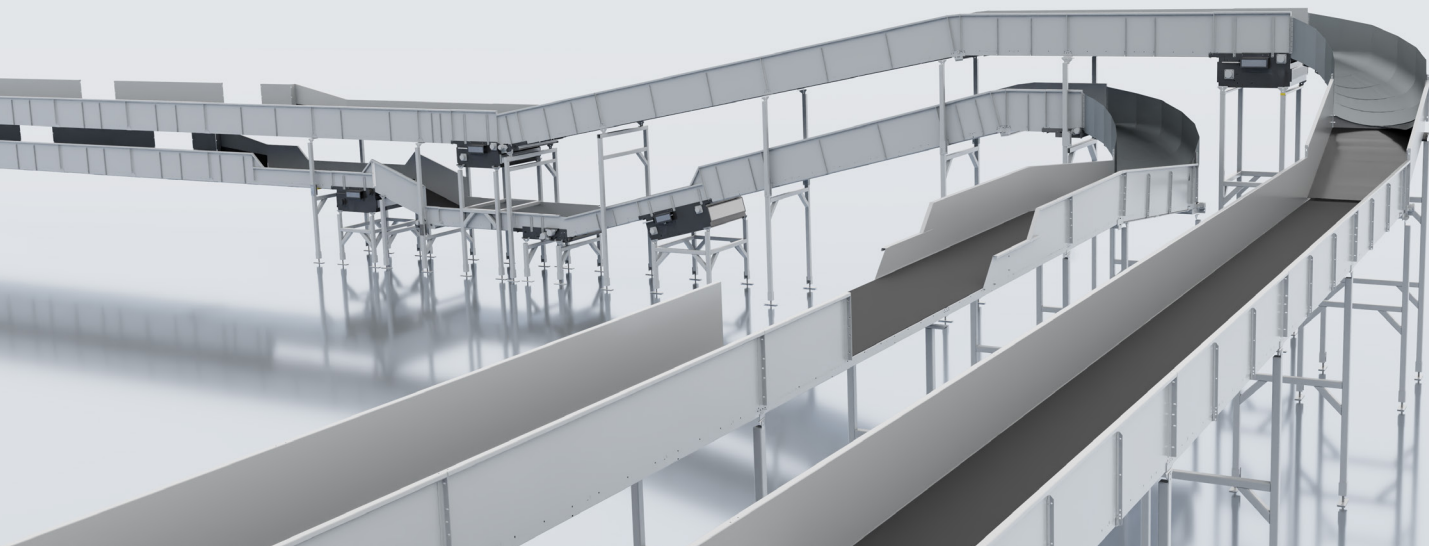
FEATURES & BENEFITS

- Package handling up to 50lbs/ft.
- Hydraulic Lift Cylinders to adjust the height to ergonomic power zone.
- Safety mechanical bumpers with limit switches as sensors.
- Belt misalignments indicated using limit switches.
- Easy loading of packages from the truck due to extendable boom into the trailer of the truck.
- Cam rollers for guiding the booms to ensure smooth extension and retraction.
- Access windows for ease of maintenance of chain drive and belt drive motors.
- Variable conveyor belt speed.

WHAT IT CAN BE USED FOR

- Extends into trucks and containers to streamline unloading packages, and to reduce manual labor.
- Used in warehouse operations to convey packages from trucks to trailing conveyors.
- Improving efficiency in logistics and supply chain industries.

* The design and technology of this product are the proprietary property of LogistiQ and may be covered by one or more patents or pending patent applications.



PARCEL BELT

EASILY TRANSPORTS PRODUCTS THROUGH DISTRIBUTION & FULFILLMENT CENTERS

DETAILS

BELT WIDTHS: Standard: 24" / 36" / 42" / 48" / 60"

SPEED: 60-400fpm

FRAME: 10-12g with Optional Impact Plates

ELEVATION: Ground Elevated and Ceiling Supported

GUARD RAIL: Standard: 10" 12" 24", Application Dependent

MTBH: Box, Poly, RNC, Application Dependent

SOUND: 80 db or under standard, Application Dependent

PRODUCT DETAILS

With a high demand for Heavy-Duty Bulk Conveyors in many distribution and fulfillment centers, LogistiQ offers a Bolted or Welded conveyor construction. This includes:

- Medium and Heavy-Duty Drives
- Tail Sections w/ Deadend Pulleys
- Noseover Transitions for Incline to Horizontal Conveyors
- Hitched Transition for Horizontal to Incline Conveyors
- Intermediate Conveyor Bed Sections w/ Side and Bottom Covers

Intermediate bed sections include slider bed and roller bed designs. Our unique structural tube supports simplify field installation providing infinite adjustment of elevations. Common accessories include knee braces, transition plates, adjoining gravity roller conveyors and spiral chutes. We meet the specs of many parcel belt end users and have the proven experience with a variety of belt manufacturers.

FEATURES & BENEFITS

- Highly Customizable
- Premium Efficiency Motors
- Smooth Operation
- Reversible Incline/Decline
- Variable Speed
- Conveying Irregular Packages

WHAT IT CAN BE USED FOR

- Distribution & Fulfillment Centers
- Collection
- Sortation
- Inbound & Outbound
- Transportation

MATERIAL TO BE HANDLED

MAILER:

HEIGHT: Min 0.12" Max 24"

LENGTH: Min 3" Max 30"

WIDTH: Min 3" Max 30"

WEIGHT: Max 70lbs

TOTE:

HEIGHT: Min 9" Max -

LENGTH: Min 27" Max 48"

WIDTH: Min 27" 48"

WEIGHT: Max 70lbs

BOX:

HEIGHT: Min 0.75" Max 36"

LENGTH: Min 6" Max 48"

WIDTH: Min 6" Max 36"

WEIGHT: Max 70lbs

ORIG. CONTAINER:

HEIGHT: Min 0.3" Max 30"

LENGTH: Min 3" Max 36"

WIDTH: Min 3" Max 30"

WEIGHT: Max 70lbs

RNC BAG:

HEIGHT: Min 6" Max 15"

LENGTH: Min 29" Max 37"

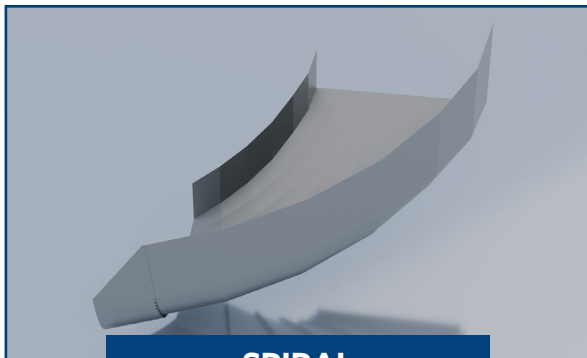
WIDTH: Min 30" Max 33"

WEIGHT: Max 70lbs

PARCEL BELT CHUTES



CONCAVE TIP



SPIRAL



SPIRAL TIP

DETAILS

WIDTHS: Custom

ELEVATIONS: Custom

SIDE GUARD: Custom

MATERIAL: 12ga Galvanized with optional UHMW Liner.

SUPPORTS: Structural Tube Supports

COUNTERWEIGHT: Manual with locking

OPTIONAL: Chute Extension

STANDARD WIDTHS: 36" / 42" / 48" / 60"

INNER RADIUS: 30" - 36"

IN-FEED-DISCHARGE: 29.5" / 40.5a"

STANDARD ANGLES: 45° / 60° / 90°

MATERIAL: 12ga Galvanized with optional UHMW Liner.

SUPPORTS: Optional supports can be added if free standing.

OPTIONAL: Chute Extension

STANDARD WIDTHS: 36" / 42" / 48" / 60"

TAPERED WIDTHS -

- 60" infeed tapered down to 48" discharge
- 78" infeed tapered down to 60" discharge

ELEVATIONS: Custom

SPIRAL ANGLES: 45° / 60° / 90°

MATERIAL: 12ga Galvanized with optional UHMW Liner.

SUPPORTS: Structural Tube Supports

COUNTERWEIGHT: Manual with locking

OPTIONAL: Chute Extension

APPLICATION SPECIFIC

These are just a few of our Chute options that we offer. No two system solutions are exactly alike, which means many Chute solutions are application specific.

PARCEL BELT PLATFORMS



SORT / OPERATOR

DETAILS

MAX WIDTH: 144"

MAX LENGTH: 240"

STAIRCASE: Available

HANDRAIL: 2-top or 3-top available

GRATING: 19w4 Bar

CONVEYOR ACCESS STEP: Available

ACCESS LADDER & EXTENSION RAIL: Available

MAINTENANCE & SHIP LADDERS: Available

CONSTRUCTION: Welded

SUPPORTS: Structural Tube Supports



MAINTENANCE

WIDTHS / LENGTHS / ELEVATIONS: Custom

STAIRCASES: Available

HANDRAIL: 2-top or 3-top Available

TOE PLATE: Available

SHIP LADDERS: Available

TREAD PLATE STRIPS: Available

TRUCK BUMPERS: Available

SUPPORT REINFORCEMENT: Available

CONSTRUCTION: Welded

GRATING: 19w4 Bar / Replaceable with Tread Plate

SUPPORTS: Structural Angle Supports



VAN LINE X

STANDARD ELEVATIONS: 24"

WIDTHS / LENGTHS / ELEVATIONS: Custom

STAIRCASES: Available

HANDRAIL: Available

GRATING: 19w4 Bar / Replaceable with smooth reinforced steel channels for unloader tracks.

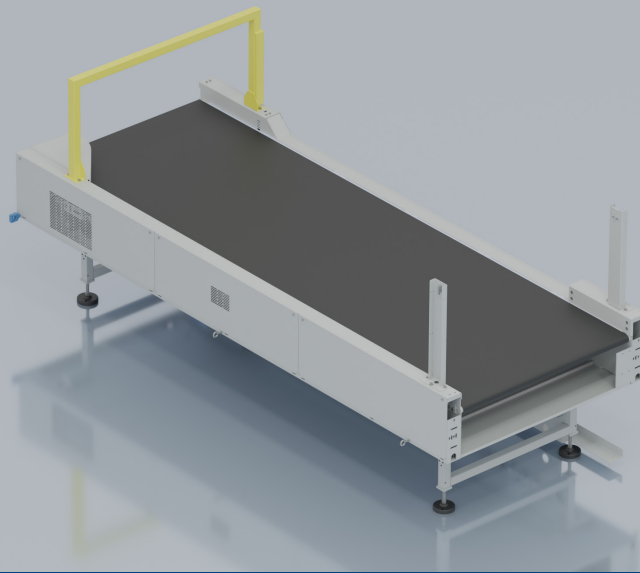
CONSTRUCTION: Welded

FINISH: Powder

SUPPORTS: Heavy-Duty

STRUCTURAL BUMPERS: Heavy-Duty

NOSING: Safety Yellow



STREAMLINE+

ENSURE EVERY PACKAGE IS SORTATION-READY

DETAILS

WIDTH: 48"

LENGTH: 9' or 12'

MOTOR: 2HP

SPEED: 800 FPM max

ELEVATION: 32"

GUARDRAIL: Integrated at 4" in height

APPLICATION USE: Configurable for right-hand or left-hand operations

PRODUCT DETAILS

The StreamLine+ is a precision belt conveyor designed to support operators in managing the exceptions that occur in high-throughput singulation. While upstream singulators successfully align 99% of the vast majority of packages into a single-file flow, StreamLine+ empowers operators to manually adjust the remaining 1% of packages — such as overlaps or side-by-side placements — before they transition to downstream gapping, scanning, and sortation conveyors.

Equipped with over-height sensors, StreamLine+ continuously monitors incoming packages and can automatically halt the flow to prevent contact with the crash bar, ensuring system protection and operator safety. At the discharge end, optional guides help funnel packages smoothly onto narrower downstream conveyors, maintaining flow consistency and reducing bottlenecks.

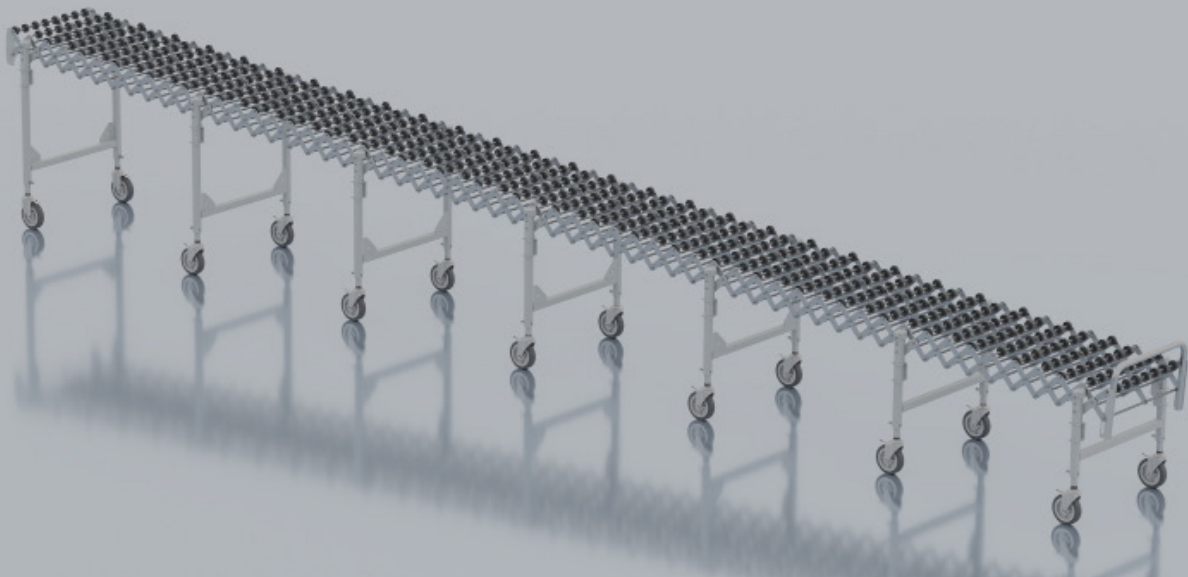
By combining automated singulation with targeted human intervention, StreamLine+ ensures that every package is properly prepared for sortation, improving overall system accuracy, efficiency, and reliability.

FEATURES & BENEFITS

- Uses nose rollers at transitions
- Ships fully assembled
- Uses timing belt drive system
- VFD Speed Control System
- Spring Take Up

WHAT IT CAN BE USED FOR

- Singulation



SKATE WHEEL FLEX

EXTENDS, CONTRACTS, & FLEXES FOR PRODUCT LOADING & UNLOADING

DETAILS

WIDTH: 18", 24", 30"

LENGTH: Sections shipped in approximately 3' increments, ranging from 12' to 40'

HEIGHT: 28" to 44"

SPEED: N/A, Uses gravity

AXLE SPACING: 3", 4", 5", 5.25"

HORIZONTAL LAYOUT: Packages pushed onto conveyor

PITCHED LAYOUT (DECLINES FROM

INDUCT TO DISCHARGE): Uses gravity to move packages

WHEEL TYPES: HDPE (High-Density Polyethylene), Steel

PRODUCT DETAILS

The Flexible Skate Wheel conveyor is portable, expands, contracts, and flexes around building structures and other equipment. It aids in transporting products between conveying equipment. The adequately spaced skate wheels on the axles help track and keep packages within the conveyor bed. Increases efficiency in package handling in hard to automate sections.

FEATURES & BENEFITS

- Expands and contracts to fit available floor space.
- Telescoping support legs help raise and lower the Skate wheel beds (to match conveying height).
- Connecting hooks to connect with other conveying equipment.
- Package Stop on one end to stop packages.
- Available with a pitch (decline) that utilizes gravity to move packages.
- Skate wheels are self-tracking when going around curves (as opposed to solid rollers).
- NO Power required!
- Can be retracted for storage (Takes up less space).
- Can be wheeled to any location in the warehouse.
- Skate wheels can be nested together to achieve higher density, closer roll centers.
- Durable plastic skate wheels outperform traditional metal rollers.

WHAT IT CAN BE USED FOR

- Loading and Unloading docks
- Moving packages in manual sort areas
- Assembly lines
- Receiving, Packaging, and Shipping Areas