

# LOGISTIQ SOLUTIONS

**VERTICALLY INTEGRATED,  
TURNKEY CONVEYANCE SOLUTIONS**

## OUR MISSION IS TO BUILD

Our innovative solutions are driven by a deep understanding of our customers and their operational needs. LogistiQ is a vertically integrated material handling and system solutions provider, purpose-built for the e-commerce distribution market. Every day, we leverage our strengths in nimbleness, speed, and precision to deliver the right solution for your operation – whether that means turnkey, fully integrated systems or tailored product integration solutions.

## WHERE WE STARTED

LogistiQ is a company with a rich history spanning a century, rooted in American innovation and manufacturing excellence. Originating from LEWCO Inc. in Sandusky, OH, LogistiQ specializes in material handling solutions tailored for the e-commerce, retail and distribution sector. Trust our third-generation, family-owned business for comprehensive services, design and manufacturing to installation, technical support and our aftermarket services. We are dedicated to providing you with the ultimate innovative solution. Our products are meticulously crafted with your needs in mind, ensuring that every piece fits perfectly into your puzzle. Whether you require a single product, a series of products to enhance your existing system, or a complete system overhaul, we are here to help propel your operations into the future.

## WHERE WE ARE TODAY

Located near the shores of Lake Erie, our impressive 750,000-square-foot facility in Port Clinton, OH, has been the center of our operations. Since launching in 2021, we've undergone two rounds of extensive renovations, with the most recent completed in early 2024. We have invested in our facility, the latest design software, advanced processes including CNC technology and robotic welding, and, most importantly, in our team. We hire individuals who are not only skilled for the task at hand but also align with our culture and core values. This enables us to deliver state-of-the-art material handling products of the highest quality.



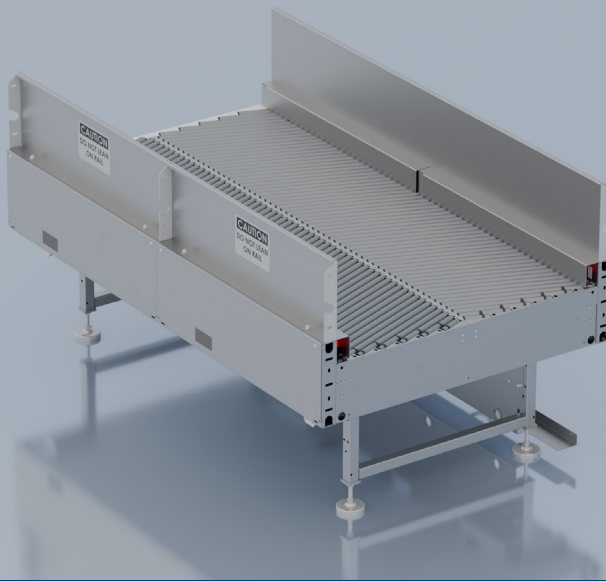
**500+**  
EMPLOYEES

**100+**  
YEARS OF INDUSTRY  
EXPERIENCE

**15+**  
PATENTS

**750k+**  
SQ. FT.  
FACILITY

**LogistiQ**



# MERGE

CONSOLIDATION OF IRREGULARLY SHAPED PACKAGES TO A SINGLE LANE

## SPECIFICATIONS

**WIDTH:** 24" up to 84"

\* Width is determined by package size, available conveying area, & application-specific needs.

**LENGTH:** 36" to 240"

**ELEVATION:** 24" to 120"

**SPEED:** Application-dependent. Individually controlled fixed speed zones at 25-350+ FPM.

**ROLLER TYPES:** 1.38" / 1.9" / 2.5" Standard

**GALVANIZED ROLLER ANGLES:**

1.38" Rollers = 20.7° / 18.6° / 16.4°

1.9" Rollers = 20.7° / 18.6° / 16.4°

2.5" Rollers = 20.2° / 18.5° / 16.8° / 15° / 13.2°

**ROLLER CENTERS:**

1.38" Rollers = 1.5" Roller Centers

1.9" Rollers = 2.25" Roller Centers

2.5" Rollers = 2.75" Roller Centers

**FRAME:** 1 2ga for 1.3" Rollers or 8ga for 2.5" Rollers

**GUARDRAIL:** Optional 2"-24" tall fixed guardrails.

**MOTOR:** ¾ HP through 2 HP inverter-duty with optional voltages available.

## PRODUCT DESCRIPTION

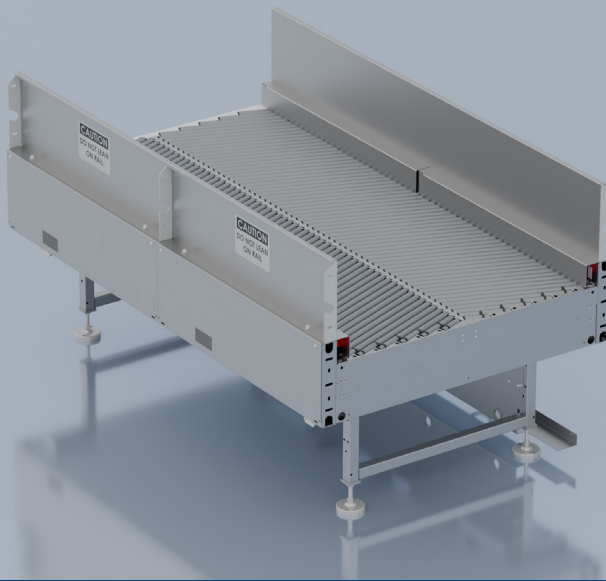
The LogistiQ Merge conveys packages from bulk flow or multiple lanes into a single file. This supports down stream activities like singulation, gapping, sortation, and/or re-direction. The rollers in multiple powered zones are driven by our patented Poly-V Hub cartridge bearings. The spring-loaded, tapered hex axles provide a snug fitment in the frame that helps minimize wear. With multiple angle options, the close roller centers effectively merge and center inbound packages of varying shapes and sizes.

## ADDITIONAL FEATURES & BENEFITS

- Conveying Irregular Packages
- Quiet Operation at High Speed
- Can Help Achieve Singulation by Pairing with the LogistiQ Aligner.

## WHAT IT CAN BE USED FOR

- Merging
- Singulation



# MERGE

CONSOLIDATION OF IRREGULARLY SHAPED PACKAGES TO A SINGLE LANE

## SPECIFICATIONS

**WIDTH:** 24" up to 84"

\* Width is determined by package size, available conveying area, & application-specific needs.

**LENGTH:** 36" to 240"

**ELEVATION:** 24" to 120"

**SPEED:** Application-dependent. Individually controlled fixed speed zones at 25-350+ FPM.

**ROLLER TYPES:** 1.38" / 1.9" / 2.5" Standard

**GALVANIZED ROLLER ANGLES:**

1.38" Rollers = 20.7° / 18.6° / 16.4°

1.9" Rollers = 20.7° / 18.6° / 16.4°

2.5" Rollers = 20.2° / 18.5° / 16.8° / 15° / 13.2°

**ROLLER CENTERS:**

1.38" Rollers = 1.5" Roller Centers

1.9" Rollers = 2.25" Roller Centers

2.5" Rollers = 2.75" Roller Centers

**FRAME:** 1 2ga for 1.3" Rollers or 8ga for 2.5" Rollers

**GUARDRAIL:** Optional 2"-24" tall fixed guardrails.

**MOTOR:** ¾ HP through 2 HP inverter-duty with optional voltages available.

## PRODUCT DESCRIPTION

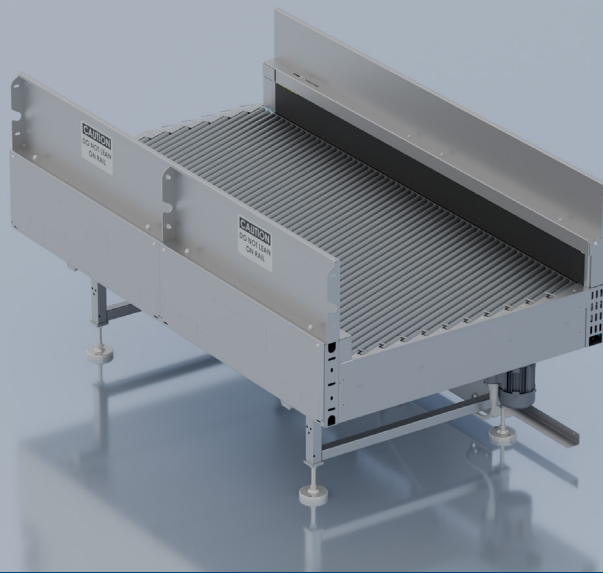
The LogistiQ Merge conveys packages from bulk flow or multiple lanes into a single file. This supports down stream activities like singulation, gapping, sortation, and/or re-direction. The rollers in multiple powered zones are driven by our patented Poly-V Hub cartridge bearings. The spring-loaded, tapered hex axles provide a snug fitment in the frame that helps minimize wear. With multiple angle options, the close roller centers effectively merge and center inbound packages of varying shapes and sizes.

## ADDITIONAL FEATURES & BENEFITS

- Conveying Irregular Packages
- Quiet Operation at High Speed
- Can Help Achieve Singulation by Pairing with the LogistiQ Aligner.

## WHAT IT CAN BE USED FOR

- Merging
- Singulation



# ALIGNER

QUICKLY CONVEYS FROM MULTI LANE FLOW, JUSTIFIES INTO SINGLE LANE FLOW

## SPECIFICATIONS

**LENGTH:** 60" to 240" or longer.

**ELEVATION:** 24" to 120"

**SPEED:** Application-dependent. Individually controlled fixed speed zones at 25-350+ FPM.

**ROLLER TYPE:** 1.38" / 2.5" Stan. Galvanized Rollers.

### ROLLER ANGLES:

1.38" Rollers = 20.7° / 18.6° / 16.4°

1.9" Rollers = 20.2 / 18.5 / 16.8° / 15° / 13.2°

2.5" Rollers = 20.2° / 18.5° / 16.8° / 15° / 13.2°

### ROLLER CENTERS:

1.38" Rollers = 1.5" Roller Centers

1.9" Rollers = 2.25" Roller Centers

2.5" Rollers = 2.75" Roller Centers

**FRAME:** 12ga or 8ga

**MOTOR:** ¾ HP through 2 HP inverter duty with optional voltages available.

**GUARDRAIL:** 6" or 12" power face belt, or Durasurf covered guardrail.

## PRODUCT DESCRIPTION

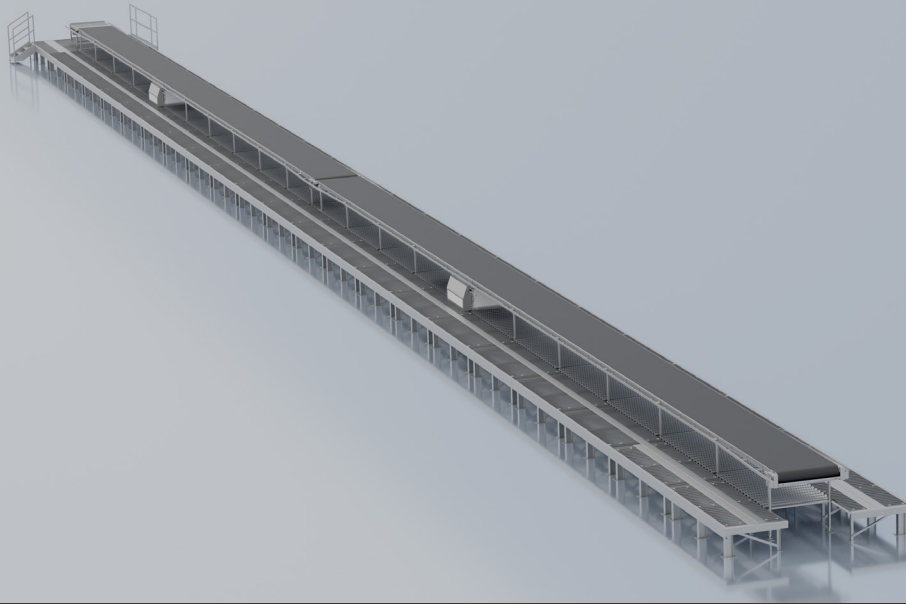
The LogistiQ Aligner justifies packages from bulk flow or multiple lanes into a right or left side edge. This supports down stream activities like singulation, gapping, sortation, or re-direction. The rollers in multiple powered zones are driven by our patented Poly-V Hub cartridge bearings. The spring loaded tapered hex axles provide a snug fitment in the frame that helps minimize wear. With multiple angle options, the close roller centers effectively align inbound packages of varying shapes and sizes. The optional vertical power face driven belt side rail helps to square packages prior to exiting the aligner.

## ADDITIONAL FEATURES & BENEFITS

- Conveying Irregular Packages
- Quiet Operation at High Speed
- Can Help Achieve Singulation by Pairing with the LogistiQ Merge.

## WHAT IT CAN BE USED FOR

- Aligning
- Singulation



# VAN LINE X

QUICK PARCEL & PACKAGE LOADING & UNLOADING

## SPECIFICATIONS

**BELT WIDTH:** 48"

**VARIABLE LENGTH PLATFORMS:** Standard 5' or 10'

**PLATFORM HEIGHT:** 24"

**BELT CONVEYOR HEIGHT:** 54"

**SPEED:** As Required / Reversible

**DRIVE:** Motorized Pulley Drive upto 10 HP

**FRAME:** Ergo-Friendly Design, Powder Finish.

**SUPPORTS:** Pre-Welded, Heavy Duty.

## PRODUCT DESCRIPTION

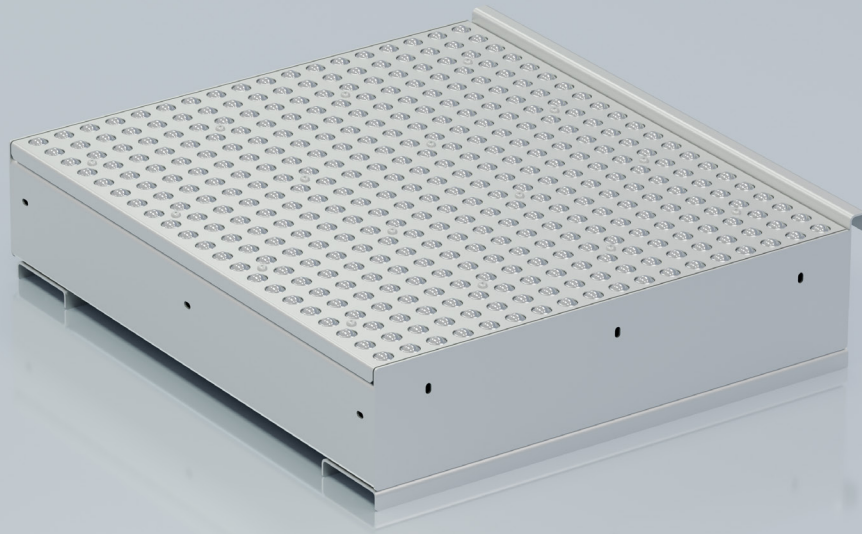
Van Line X is an innovative design intended to provide "Standardized" conveyor and platform modular components that are uniform in length, and assembled via well designed bolt together connections. The finished installation is 100% comparable to traditional Van Line installations that are often field fitted and welded together on site.

## ADDITIONAL FEATURES & BENEFITS

- Common Size, Standardized Conveyor Components
- Shortens Installation Time by 30%!
- Ships in a Kitted Format for High Density Freight Consolidation.
- Built to End User Specifications.
- Shorter Engineering & Manufacturing Lead Times.

## WHAT IT CAN BE USED FOR

- Intended for loading & unloading delivery vans, Van Line X is a direct interchange to traditional Van Line Conveyors & Work Platforms used in the parcel industry for years.



# BALL TABLE

ALLOWS FOR EASE OF CONVEYANCE IN ANY DIRECTION

## SPECIFICATIONS

**WIDTH:** 9" up to 51"

\* Width is determined by package size, available conveying area, & application-specific needs.

**LENGTH:** Up to 120"

**ELEVATION:** As required per application.

**BALL CENTERS:** 2", 3", 4", & 6"

**BALL TYPES / CAPACITY PER BALL:**

50 lbs. Steel

50 lbs. Nylon

65 lbs. Steel with Flange

75 lbs. Steel

75 lbs. Stainless Steel

**FRAME STYLES:** BPA, BPB, BPC, & DPD

## PRODUCT DESCRIPTION

The Ball Transfer Tables are used to manually rotate, reposition, or remove flat bottom products easily & efficiently. The BPA style is designed to be placed on an existing worktable, sort table, or cart. The BPB style is designed as a free-standing transfer table with smooth edges. The BPC style is built as a complete section that can be utilized as a free-standing unit or coupled to existing sections of gravity roller conveyor and are typically used as a transition or positioning areas within the line. The BPD style plates are designed to replace rollers in existing sections of gravity roller conveyors and are typically used as a transition or positioning area within the line.

## ADDITIONAL FEATURES & BENEFITS

- Convey in Any Direction
- Conveying Irregular Packages
- Multiple Ball Types/Frames for Various Applications
- Minimal Spare Parts

## WHAT IT CAN BE USED FOR

- Sortation
- Load Accumulation
- Side Loading
- Unloading
- Rotation



# FINGER BRIDGE

CLOSING CONVEYANCE GAPS & MAINTAINING SAME SURFACE ELEVATION

## SPECIFICATIONS

**WIDTH:** 33" / 45"

\* Width is determined by package size, available conveying area, & application-specific needs.

**LENGTH, COLLAPSED:** 87.5"

**LENGTH, EXTENDED:** 133.5"

OR

**LENGTH, COLLAPSED:** 99.5"

**LENGTH, EXTENDED:** 159".5

**ROLLER CENTERS:** 3"

**ELEVATION:** 33" +/- 3"

**ROLLER TYPE:** Standard Galvanized Roller options:

1.90" diameter, 12 ga. wall tube with 7/16" Hex cold rolled steel axles, spring retained.

2.5" diameter, 11 ga. wall tube with 11/16" Hex cold rolled steel axles, spring retained.

Standard bearings are Semi-precision

**SUPPORTS:** Heavy-Duty Leg Supports

Heavy-duty swivel caster with wheel lock (discharge end only). Self-tracking extension & retraction.

## PRODUCT DESCRIPTION

Many sorting facilities rely on multiple docks, creating aisleway gaps along collector conveyors that pose ergonomic challenges. Our Finger Bridge solves this with extendable, heavy-duty rollers that create a smooth, level surface—eliminating the need for operators to lift heavy packages over the gap. Its retractable design allows quick egress when needed, and the multi-lane layout helps orient packages for seamless flow to inbound or outbound conveyors. Operators appreciate the improved efficiency and ergonomic benefits this solution brings to their daily tasks.

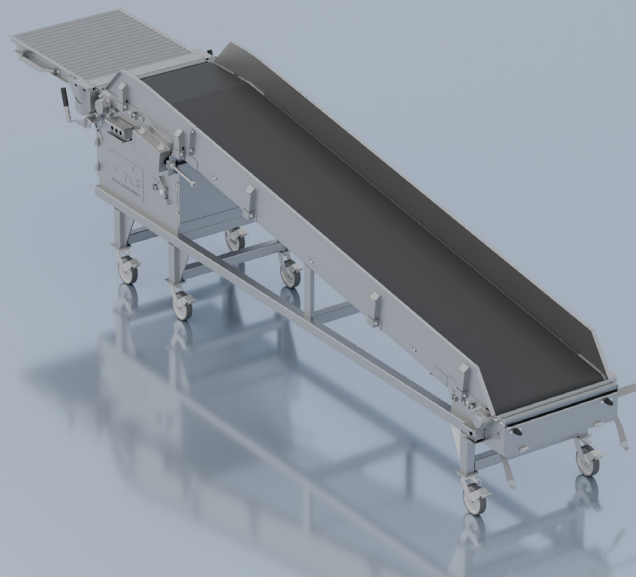
## ADDITIONAL FEATURES & BENEFITS

- Extendable Conveyor that maintains same surface elevation.
- Allows for easy egress to aisle ways with extendable fingers.
- Due to construction, provides easy maneuverability for all package sizes.
- Multi Lane Gravity Roller Conveyor; 1.9 12g rollers on 2.25 centers.
- Swivel lock casters allow for easy extending.
- Heavy Duty impact pan to protect the conveyor in robust handling applications.

## WHAT IT CAN BE USED FOR

- Dock Doors
- Aisle Ways
- Large Package Handling
- Egress in Lieu of Cross-Over/Stairways

\* The design and technology of this product are the proprietary property of LogistiQ and may be covered by one or more patents or pending patent applications.



# T-SORT BELT

EASY TO USE WHEN UNLOADING NON-CONFORMING PRODUCTS

## SPECIFICATIONS

**BELT WIDTH:** 35.5"

**LENGTH WITHOUT CHUTE:** 192"

**LENGTH WITH CHUTE:** 288.25"

**ELEVATION IN-FEED:** 31"

**ELEVATION DISCHARGE:** 54"

**SPEED:** 60 FPM, Variable Speed

**DRIVE:** 1 HP motorized pulley, reversible located within frame.

**MOTOR:** 1 HP, Inverter Duty, Reversible

**GUARD RAIL:** Removable

**SUPPORTS:** Heavy-duty Leg supports with swivel caster & wheel locks.

## PRODUCT DESCRIPTION

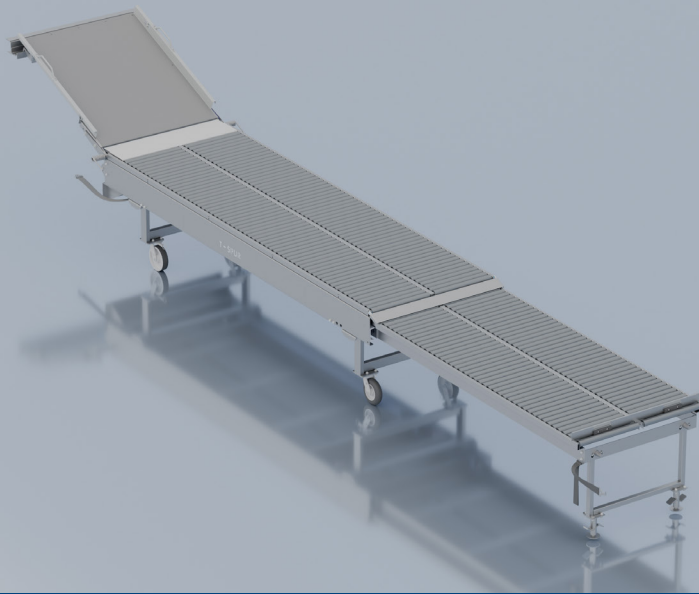
We developed a Portable T-Sort Powered Belt Conveyor with a matching portable gravity section to deliver true mobility and handle hard-to-convey products in sorting, loading, and unloading applications. Its UHMW-lined chute provides a low-friction transfer surface, making it easy for operators to move challenging items on or off adjoining equipment. Powered by a 2 HP reversible motorized pulley running on 115V single-phase power, with a 20-ft twist-lock cord that stays secure—this heavy-duty, multi-use unit is simple to move and deploy wherever it's needed.

## ADDITIONAL FEATURES & BENEFITS

- Reversible Incline/Decline
- Lift Gate for Egress Access
- 115V Single Phase Power
- Variable Speed
- Removable Side Rails for Oversized Package.
- Optional Gravity Roller In-Feed Conveyor.
- Plug & Play Electrical Connections.
- 8" Offset Heavy-Duty Swivel Locking Casters Allow for Easy Maneuvering.

## WHAT IT CAN BE USED FOR

- Manual Sort Operations
- Loading & Unloading Transport Vehicles



# T-SORT ROLLER

EXPANDING & CONTRACTING NEEDS AT LOADING DOCK

## SPECIFICATIONS

**WIDTH BETWEEN FRAMES:** 42"

**LENGTH, COLLAPSED:** 144"

**STANDARD LENGTH, EXTENDED:** Standard 240"

\* Self-tracking extension & retraction.

**PIVOTING LENGTH, EXTENDED:** Chute 288.25"

**CHUTE:** UHMW Lined

**ELEVATION:** 33" +/- 3"

**ROLLER TYPE:** 1.90" Dia, 12ga Galvanized Rollers

**ROLLER CENTERS:** 2.25"

**FRAME:** Ergo-friendly design, powder finish

**SUPPORTS:** Heavy-duty supports & swivel caster with wheel lock (discharge end only).

## PRODUCT DESCRIPTION

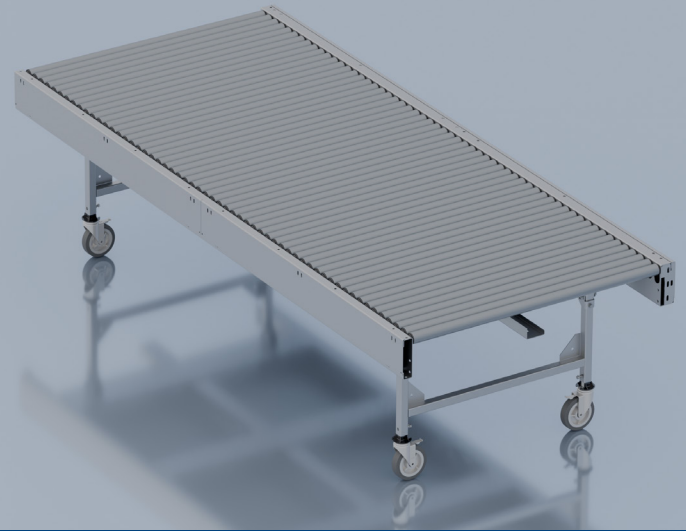
We developed the Portable T-Sort Roller Conveyor to help customers quickly expand their manual sort capacity. Its flexible design allows operators to easily move the 12-ft components, lock them into position, and extend them to 20 ft, achieving up to 60 ft when multiple segments are connected. The spring-loaded, UHMW-lined chute can tilt to interface at 90 degrees, creating a low-friction sorting surface for new conveyor lanes. Customers have seen meaningful productivity gains by deploying these cost-effective units without the disruption or expense of major system expansions.

## ADDITIONAL FEATURES & BENEFITS

- Available in (3) 20 ft Extendable Mating Sections.
- 8" Offset Heavy-Duty Swivel Locking Casters allow for Easy Maneuvering.
- Torsion Spring Loaded Pivoting Chute
- Dual Lane 1.9 16g Rollers on 2.25 Centers
- Easy In & Out Extension

## WHAT IT CAN BE USED FOR

- Manual Sort Operations
- Loading & Unloading Transport Vehicles



# MPRC+

## QUICKLY DEPLOYABLE CONVEYANCE SYSTEM

### SPECIFICATIONS

#### CONVEYING WIDTH: 36" OR 48"

The effective conveying width is determined by package size, available floor space, & application specific needs.

#### CONVEYING ELEVATION: 24" - 48"

Standard conveying elevation is 32", but load & unload areas can be lower or higher as needed. Elevations higher & lower than this range can be achieved on a custom basis.

#### LENGTH (STRAIGHT): 60" / 120"

The standard individual straight section is 120" long; these can be coupled together for runs of any length needed. Lengths other than the standard 60" & 120" are available on a custom basis but need to be divisible by the roller centers.

#### DEGREE (CURVED): 30° / 45° / 60° / 90°

90° turns are standard on most systems, but 30°, 45°, & 60° turns are available as needed for special layout situations.

### PRODUCT DESCRIPTION

We developed an innovative modular conveyor system that is configurable, portable, quiet, durable, and cost-effective. Our Modular Portable Roller Conveyor Plus (MPRC+) system can connect in straight runs up to 80 feet with a single 110V power drop. The system can combine with powered curves to maneuver around existing equipment or building structures. Our configurable conveying system can provide you with the flexibility you need to manage ever-changing markets. What makes this stand out from our standard MPRC is the optional feature for close roller spacing, along with covered bands. Standard spacing is at a 2.1" roller center.

### ADDITIONAL FEATURES & BENEFITS

- Prevents Wear & Tear
- Protects Operators
- Improved Durability, Lower Maintenance

### WHAT IT CAN BE USED FOR

- Transportation
- Sortation
- Merging
- Dock Delivery
- Zone Accumulation
- Creating Gaps
- Parcel Fulfillment



# MPRC

## QUICKLY DEPLOYABLE CONVEYANCE SYSTEM

### SPECIFICATIONS

#### CONVEYING WIDTH: 36" OR 48"

The effective conveying width is determined by package size, available floor space, & application specific needs.

#### CONVEYING ELEVATION: 24" - 48"

Standard conveying elevation is 32", but load & unload areas can be lower or higher as needed. Elevations higher & lower than this range can be achieved on a custom basis.

#### LENGTH (STRAIGHT): 60" / 120"

The standard individual straight section is 120" long; these can be coupled together for runs of any length needed. Lengths other than the standard 60" & 120" are available on a custom basis but need to be divisible by the roller centers.

#### DEGREE (CURVED): 30° / 45° / 60° / 90°

90° turns are standard on most systems, but 30°, 45°, & 60° turns are available as needed for special layout situations.

### PRODUCT DESCRIPTION

Keeping up with the continually changing and ever-growing retail, e-commerce and distribution industries can be a daunting task as you strive to stay ahead of the pack. The traditional fixed positioned conveying systems are designed to carry out a single process, limiting flexibility required for ever-changing demand. We developed an innovative modular conveyor system that is configurable, portable, quiet, durable, and cost-effective. Our Modular Portable Roller Conveyor (MPRC) system can connect in straight runs up to 80 feet with a single 110V power drop. The system can combine with powered curves to maneuver around existing equipment or building structures. Our configurable conveying system can provide you with the flexibility you need to manage ever-changing markets.

### ADDITIONAL FEATURES & BENEFITS

- Safe - No Guarding
- Portable
- Configurable/Re-Configurable
- 110V Single Phase Power Req.
- Reversible
- Variable Speed
- Close Roller Centers
- Fully Assembled for Easy Installation
- Plug & Play
- Requires Minimal Spare Parts
- Smooth Operation
- Quiet

### WHAT IT CAN BE USED FOR

- Transportation
- Sortation
- Merging
- Dock Delivery
- Zone Accumulation
- Creating Gaps
- Parcel Fulfillment

# MPRC+ SYSTEM LAYOUT



**1W1F**

A single-lane system with (1) runout for transport or sorting. Shown with (2) dock conveyors.



**2W2F**

A dual-lane system with (2) runouts for transport or sorting. Shown with (3) dock conveyors. Opportunity at dock to sort to the (2) destination runouts.



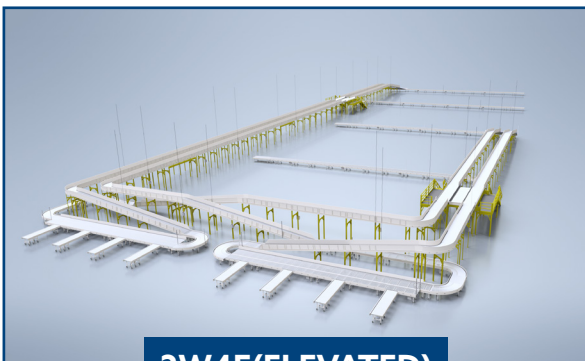
**2W3F**

A dual-lane system with (3) runouts for transport or sorting. Shown with (4) dock conveyors. Opportunity at dock sort to runout (1), or runouts (2) & (3). A sort position further downstream provides sorting to runout (2) or if unnamed product will travel to runout (3).



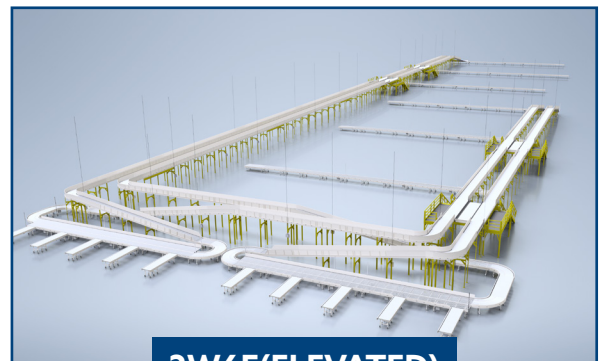
**2W4F**

A dual-lane system with (4) runouts for transport or sorting. Shown with (5) dock conveyors. Opportunity at dock sort to runouts (1) & (2), or runouts (3) & (4). Downstream sort positions provide sorting to first of (2) runouts, or if unnamed, product runs to last runout pair.



**2W4F(ELEVATED)**

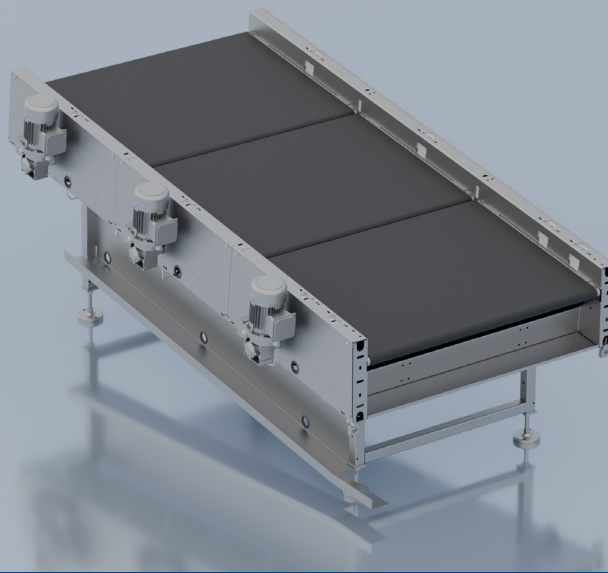
A dual-lane system with (2) elevated sides of (2) lanes each. (4) runouts for transport or sorting. Shown with (8) dock conveyors. Opportunity at all dock positions to sort. One side feeds runouts (1) & (2), the other feeds runouts (3) & (4). If unnamed, product runs to last pair.



**2W6F(ELEVATED)**

A dual-lane system with (2) elevated sides of (2) lanes each. (6) runouts for transport or sorting. Shown with (10) dock conveyors. Opportunity at all dock positions to sort. One side feeds runouts (1) thru (3), the other feeds runouts (4) thru (6). If unnamed, product runs to last pair.

\* The design and technology of this product are the proprietary property of LogistiQ and may be covered by one or more patents or pending patent applications.



# GAPPER

MULTI-SECTION BELT CONVEYOR THAT CREATES SPACE BETWEEN PACKAGES

## SPECIFICATIONS

**WIDTH:** Application Dependent

\* Width is determined by package size, available conveying area, & application-specific needs.

**BELT WIDTH:** Application Dependent

**LENGTH:** Application Dependent

**SPEED:** Variable FPM

**FRAME:** Frame: 8ga, 12 ga Slider Bed.

**MOTOR:** AC or DC

**FRAME:** Ergo-friendly design, powder finish.

**GUARDRAIL:** 4" Both Sides

**ELEVATION:** Variable, Standard 32" to 48".

## PRODUCT DESCRIPTION

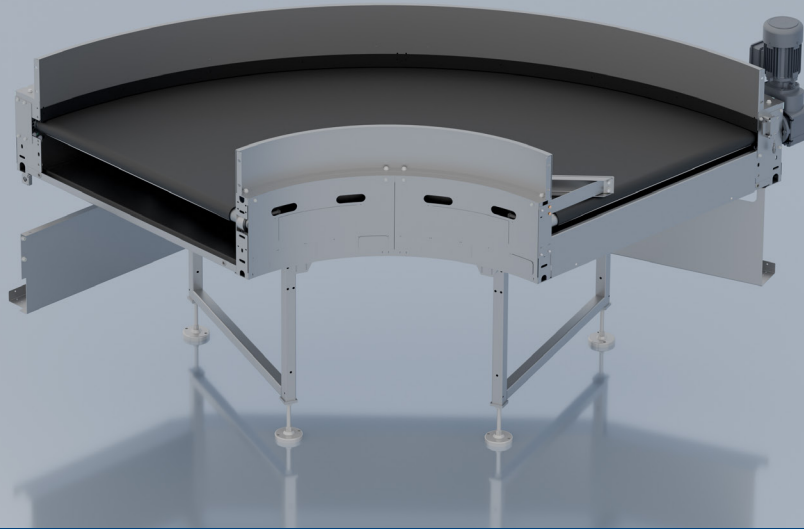
The Gapper is a multi-section conveyor that is used to create gap spacing between packages during automated sortation. This helps to facilitate the scanning, weighing, and sorting of items. This conveyor is specifically designed to support down-stream functions. With a single 480V speed control box per section allowing you to adjust speeds where needed.

## ADDITIONAL FEATURES & BENEFITS

- Static Gapping
- Dynamic Gapping
- Support Downstream Functions

## WHAT IT CAN BE USED FOR

- Sortation
- Product Sizing
- Scanning
- Weighing
- Product Separation



# BELT CURVE

EFFECTIVE DIRECTIONAL CHANGE OF PACKAGES

## SPECIFICATIONS

**BELT WIDTH:** Up to 60"

\* Width is determined by package size, available conveying area, & application-specific needs.

**SPEED:** Variable FPM

**FRAME:** 10GA, 16" deep

**MOTOR:** Application Dependent

**GUARDRAIL:** Optional

**ELEVATION:** 32" / 48" Standard

**ARC:** 45° / 90° / 180°

## PRODUCT DESCRIPTION

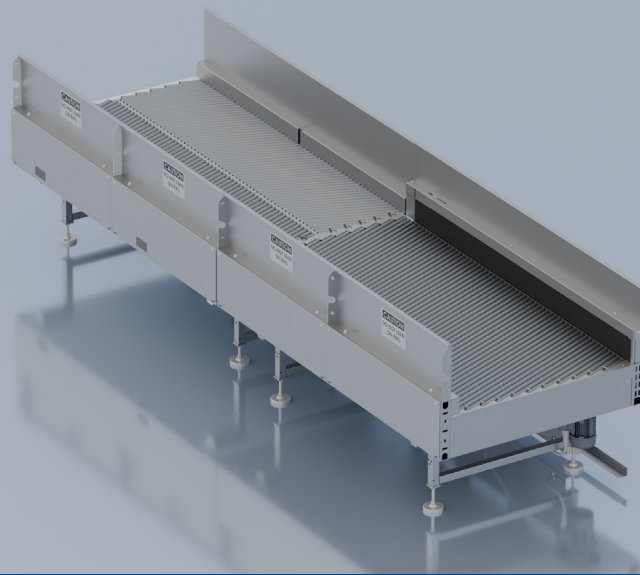
We developed our Belt Curve to effectively change application direction for packages that are routinely handled on belt conveyors. Various radiuses available to meet specific needs.

## ADDITIONAL FEATURES & BENEFITS

- Smooth Product Transfers
- Low Noise
- Durable Construction

## WHAT IT CAN BE USED FOR

- Help with Facilitation of Various Building Layouts
- Directional Changes for Products Handled on Belt Conveyors
- Maintaining Product Orientation, Directionally
- Handling of Irregularly Shaped Products



# LOGISTIQ SMALL PACKAGE SINGULATOR

CONVERTS BULK FLOW PACKAGES INTO SINGLE FILE FLOW

## SPECIFICATIONS

### LENGTH:

- **ALIGNER:** 60" - 240"
- **MERGE:** 36" - 240"

**ELEVATION:** 21" Minimum

**SPEED:** Application-Dependent

**ROLLER TYPE:** 1.38", 1.9" 2.5" Stan. Galvanized

**ROLLER ANGLES:** See Merge & Aligner sheet.

**ROLLER CENTERS:** See Merge & Aligner sheet.

**FRAME:** 12ga or 8ga

**MOTOR:** ½ HP through 2 HP inverter duty with optional voltages available.

### GUARDRAIL:

- **ALIGNER:** 2" - 24"
- **MERGE:** 6" or 12" power face belt, or Durasurf covered guardrail

### WIDTH:

- **ALIGNER:** 24" - 48"
- **MERGE:** 36" - 84"

**ALIGNER VERTICAL BELT:** 6" & 12" wide

## PRODUCT DESCRIPTION

The LogistiQ Small Package Singulator uses 9 individually controlled speed zones to transition bulk or multi-lane flow into a single file, aligning packages to the left or right before they enter the downstream gapping conveyor. Its powered roller zones use Poly-V belts with our patented Poly-V cartridge bearing hub, while spring-loaded tapered hex axles ensure a snug, low-wear fit. With multiple angle options and tight roller centers, it effectively aligns packages of varying shapes and sizes, and an optional vertical power-face belt side rail further squares items before discharge.

## ADDITIONAL FEATURES & BENEFITS

- Close Roller Spacing Accommodates Irregular Packages.
- Extremely Quiet Operation at Speeds of 650 FPM per min. or more.
- Designed with Ease of Maintenance in mind.

## WHAT IT CAN BE USED FOR

- Used to singulate packages for sorting applications via merging, aligning.

## MATERIAL TO BE HANDLED

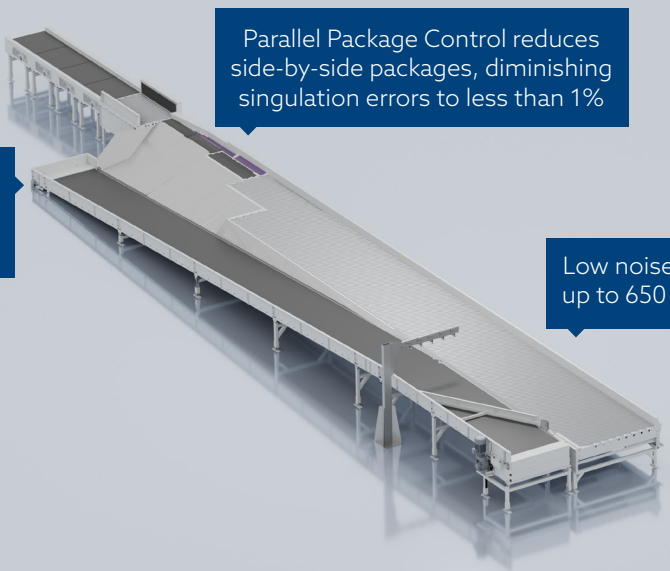
**HEIGHT:** Min 0.5" Max 26"

**LENGTH:** Min 6" Max 42"

**WIDTH:** Min 4" Max 33"

**WEIGHT:** Max 50lbs.

\* The design and technology of this product are the proprietary property of LogistiQ and may be covered by one or more patents or pending patent applications.



Maintenance windows enable easy access to the conveyor on the platform side or from above

Parallel Package Control reduces side-by-side packages, diminishing singulation errors to less than 1%

Low noise with speeds up to 650 FPM or more

# FLOWLOGIQ L11

## LARGE PACKAGE SINGULATOR

CONVERTS BULK FLOW PACKAGES INTO SINGLE FILE FLOW

### SPECIFICATIONS

**OVERALL LENGTH WITH MERGE, ALIGNER, & GAPPER:** 92' 2"

**EFFECTIVE WIDTH OF SINGULATOR:** 84-5/8"

**OVERALL WIDTH OF LPS:** 15'4"

**TOP OF ROLLER:** 32"

**INFEEED SPEED:** Up to 410 FPM

**DISCHARGE SPEED:** Up to 730 FPM

**EFFECTIVE WIDTH OF RECIRC:** 48-72"

**GALVANIZED ROLLERS:** 2.50" OD

**ROLLER CENTERS:** 2.819"

**FRAME THICKNESS:** 3/16"

**GUARDRAIL:** 8" or Application Dependent

**ROLLER SKEW:** 20 degrees

**MOTORS:** 1HP to 2HP and 7.5HP on Recirculation Belt

**MOTOR CONTROLLER:** 460V/3PH/60Hz

**FULL LOAD AMPS:** Roughly 100

\* The design and technology of this product are the proprietary property of LogistiQ and may be covered by one or more patents or pending patent applications.

### PRODUCT DESCRIPTION

The LogistiQ FlowLogiQ L11 conveys packages from bulk flow or multiple lanes in to a single file flow, where the packages will then be aligned to the left or the right side prior to discharge, on the downstream gapping conveyor.

The rollers in multiple powered zones are driven by Poly-V belts using our patented Poly-V cartridge bearing hub. The spring loaded tapered hex axles provide a snug fitment in the frame that helps minimize wear. With multiple angle options, the close roller centers effectively align inbound packages of a variety of shapes and sizes. The optical vertical belt side rail squares packages before they exit the Singulator.

### ADDITIONAL FEATURES & BENEFITS

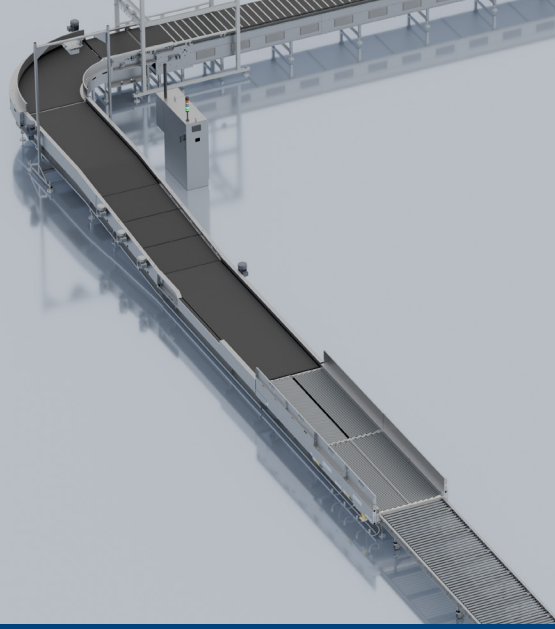
- Integrated Controls
- Externally frame-mounted VFDs for ease of installation, maintenance, and troubleshooting.

### WHAT IT CAN BE USED FOR

- Used to put packages in single file for metering and sortation

### OPTIONS

- Gapping Conveyors
- Scanners
- Dynamic Divert Modules
- Over Head Conversion Systems
- Parallel Package Control
- Metering Conveyor
- Aligner
- Gapper



# THE LOGISTIQ SORTATION SYSTEM

SINGULATES, GAPS, SCANS, & SORTS

## SPECIFICATIONS

**LENGTH:** Application Dependent

**HEIGHT:** 32" - 48"

- **ERGONOMIC HEIGHT:** 32"

**WIDTH:** Application Dependent

**RANGE OF GAPPING:** 4" Minimum

**MATERIAL TO BE HANDLED:**

**BOX:**

- **HEIGHT:** Min 0.5" Max 26"
- **LENGTH:** Min 4" Max 42"
- **WIDTH:** Min 3" Max 33"

**NON-BOX:**

- **HEIGHT:** Min 0.12" Max 5"
- **LENGTH:** Min 4" Max: 16"
- **WIDTH:** Min 3" Max 13"
- **WEIGHT:** Max 50lbs.

**\*EQUIPMENT INCLUDED:**

Mechlite, Gapper, Singulator

\*\*Will integrate with Sorters.

## PRODUCT DESCRIPTION

The LogistiQ Sortation System takes bulk package flow and sorts to individual bins with minimal associate interaction. The modular design allows for features to be added or removed as necessary for the application. The system begins with a Singulator that conditions packages into a single-file line aligned to one side. Packages then move through a problem-solving workstation where associates correct shingled or stacked items before entering the operator-monitored StreamLine+. A downstream gapping belt creates a consistent 4" gap before each package is scanned to determine its destination. From there, packages travel down the sorter and are diverted into the appropriate Automatic Storage Device for operator unloading, while any unsorted items continue to a designated collection area.

## ADDITIONAL FEATURES & BENEFITS

- Can handle a wide variety of package types from boxes to poly bags.
- Modular design allows it to fit in any configuration.
- Designed to handle 5500PPH.
- Runs quietly and safely to allow associates around the system.
- Centralized controls on one control panel.
- Singulation to end of scan in under 48'.

## WHAT IT CAN BE USED FOR

- Last Mile Sortation
- Like Package Grouping
- Singulation: Turn bulk package flow into aligned even flow.
- Gapping: Space out aligned packages.
- Scanning: Bar code reading.



\* The design and technology of this product are the proprietary property of LogistiQ and may be covered by one or more patents or pending patent applications.



# AUTOMATIC STORAGE DEVICE

ACCUMULATES DIVERTED PACKAGES & RAISES TO ERGONOMIC PICK HEIGHT

## SPECIFICATIONS

**BELT MAX VOLUME:** 40+ Cubic Foot

**MAX LOAD RATING:** 500lbs

**WIDTH:** 94"

**DEPTH:** 45"

**HEIGHT OVER ALL:** 56"

\* Note standard size. Custom sizes available per application.

## PRODUCT DESCRIPTION

The LogistiQ Automatic Storage Device is designed to receive packages that come from a sorter, for example a Vertical Cross Belt Sorter. With the use of a low friction and impact resistant belt that will automatically raise and lower based on the incoming packages. This allows for the ability to maintain an optimal ergonomic pick height for an associate. The attached chute is covered with a low friction UHMW and is adjustable to select degree modification to maintain package speed as it enters the ASD belting. This assists in the automation process, in moving packages to the next location.

## ADDITIONAL FEATURES & BENEFITS

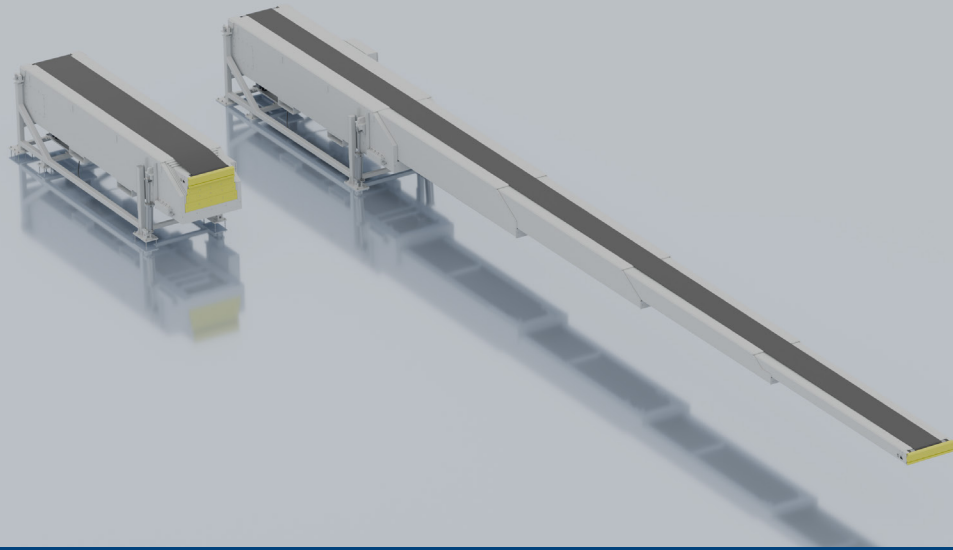
- Designated Space for Packages
- Aids in Sortation for Shipping
- Low Noise
- Durable Construction
- Ergonomic Storage Buffer
- Designed for fast installation and ease of maintenance.
- Incoming package arrival safety lights alert operators of inbound products.
- Accumulation for destination packages.

## WHAT IT CAN BE USED FOR

- Final automated sortation before loading a truck.
- Holds variety of package and mailer sizes and weights.
- Final last mile automation for routine sorting.
- Improved ergonomics for package sorting.



\* The design and technology of this product are the proprietary property of LogistiQ and may be covered by one or more patents or pending patent applications.



# TELESCOPING BOOM CONVEYOR

EXTENDABLE UNLOADER WITH FOUR BOOMS FOR HANDLING PACKAGES

## SPECIFICATIONS

**EXTENDED LENGTH:** 70'-6"

**RETRACTED LENGTH:** 18'-9 1/2"

**BASE WIDTH:** ~4'

**BELT WIDTH:** 21"

**INFEED ELEVATION:** 1'-3 1/4" to 5'6"

**BOOM TRAVEL SPEED:** 40FPM

**BELT SPEED:** 50, 80, and 100FPM

**BELT DRIVE:** 3HP Drum Motor

**CHAIN DRIVE:** 1 1/2 HP Geared Motor

**HYDRAULIC POWERPACK MOTOR:** 3HP

**LOAD:** 50lbs/ft + 250lb at the tip

## PRODUCT DESCRIPTION

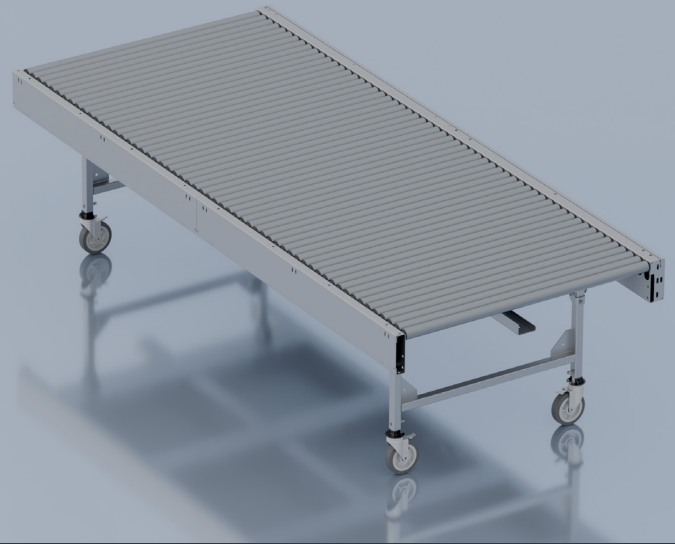
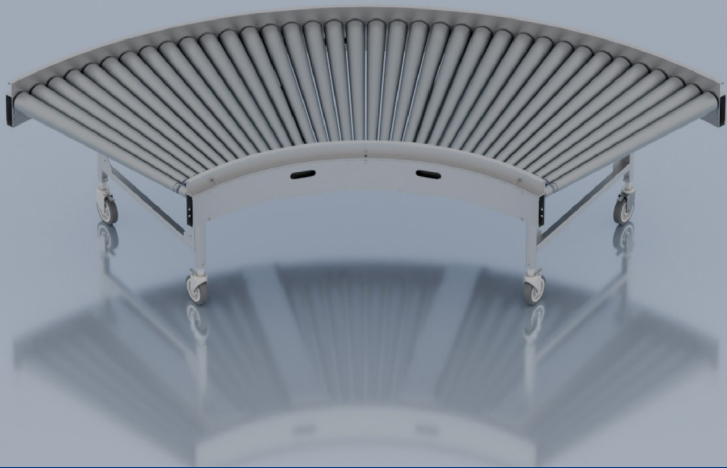
Telescopic Boom Conveyors are designed for efficient material handling, featuring hydraulic cylinders for smooth lifting and lowering. Our Telescopic Boom Conveyor has four synchronously extendable booms, with a robust base for durability and stability in industrial environments. It is equipped with safety bumpers at the loading area to prevent damage in presence of obstacle.

## ADDITIONAL FEATURES & BENEFITS

- Handles packages up to 50 lbs/ft with variable belt speed.
- Hydraulic lift cylinders adjust height for ergonomic loading.
- Extendable boom allows easy loading directly from truck trailers, guided by cam rollers for smooth extension and retraction.
- Safety bumpers and limit switches provide protection and indicate belt misalignment.
- Access windows allow easy maintenance of chain and belt drive motors.
- Cam rollers guide the booms for smooth extension and retraction.

## WHAT IT CAN BE USED FOR

- Extends into trucks and containers to streamline unloading packages, and to reduce manual labor.
- Used in warehouse operations to convey packages from trucks to trailing conveyors.
- Improving efficiency in logistics and supply chain industries.



# MPRC+ WITH CYBERLOGIQ

QUICKLY DEPLOYABLE CONVEYANCE SYSTEM

## SPECIFICATIONS

### CONVEYING WIDTH: 36" OR 48"

The effective conveying width is determined by package size, available floor space, & application specific needs.

### CONVEYING ELEVATION: 24" - 48"

Standard conveying elevation is 32", but load & unload areas can be lower or higher as needed. Elevations higher & lower than this range can be achieved on a custom basis.

### LENGTH (STRAIGHT): 60" / 120"

The standard individual straight section is 120" long; these can be coupled together for runs of any length needed. Lengths other than the standard 60" & 120" are available on a custom basis but need to be divisible by the roller centers.

### DEGREE (CURVED): 30° / 45° / 60° / 90°

90° turns are standard on most systems, but 30°, 45°, & 60° turns are available as needed for special layout situations.

## PRODUCT DESCRIPTION

We developed an innovative modular conveyor system that is configurable, portable, quiet, durable, and cost-effective. Our MPRC+ can connect in straight runs up to 80 feet on a single 110V power drop and integrate with powered curves to navigate around existing equipment, giving you the flexibility needed for fast-changing markets. What sets it apart from the standard MPRC is its optional close roller spacing and covered bands, with standard centers at 2.1 inches.

CyberLogiQ elevates this even further—not just as a product, but as a flexible, intelligent platform designed to integrate seamlessly with sensors, control cards, and motors. With zoned accumulation, dynamic singulation, merging, and gapping control, it optimizes conveyor performance to maximize efficiency and throughput.

## ADDITIONAL FEATURES & BENEFITS

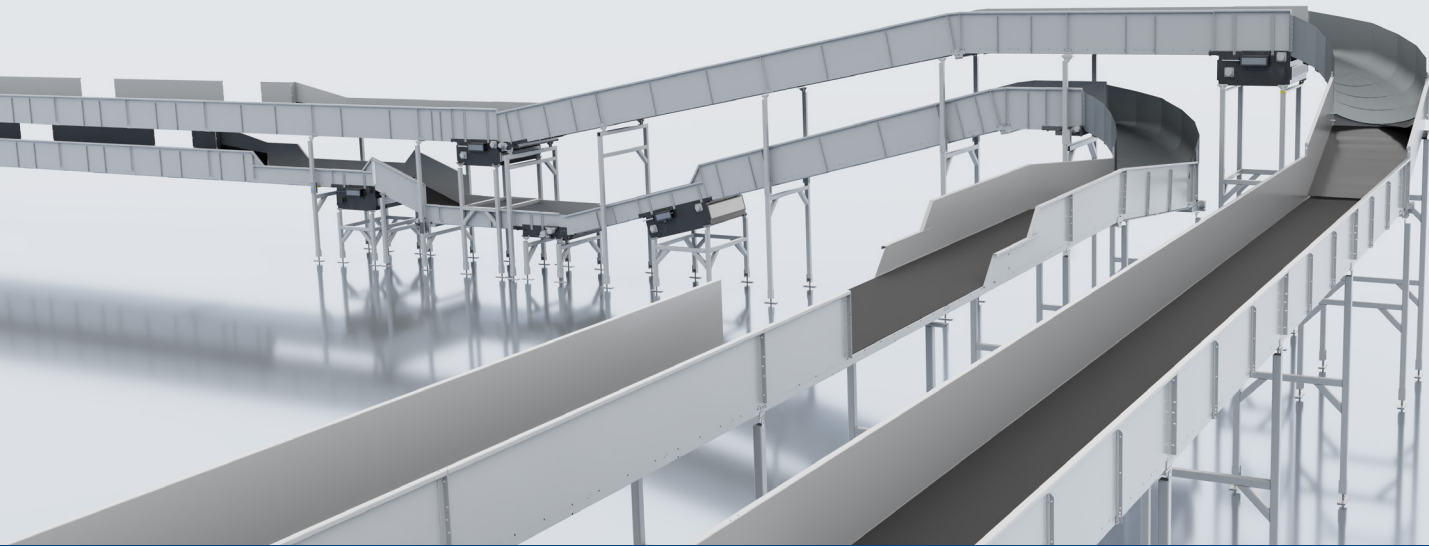
- Prevents Wear & Tear
- Protects Operators
- Improved Durability, Lower Maintenance

## WHAT IT CAN BE USED FOR

- Transportation
- Sortation
- Merging
- Dock Delivery
- Zone Accumulation
- Creating Gaps
- Parcel Fulfillment



\* The design and technology of this product are the proprietary property of LogistiQ and may be covered by one or more patents or pending patent applications.



# PARCEL BELT

EASILY TRANSPORTS PRODUCTS THROUGH DISTRIBUTION & FULFILLMENT CENTERS

## SPECIFICATIONS

**BELT WIDTHS:** Standard: 24" / 36" / 42" / 48" / 60"

**SPEED:** 60-400fpm

**FRAME:** 10-12g with Optional Impact Plates

**ELEVATION:** Ground Elevated and Ceiling Supported

**GUARD RAIL:** Standard: 10" 12" 24", Application Dependent

**MTBH:** Box, Poly, RNC, Application Dependent

**SOUND:** 80 db or under standard, Application Dependent

## PRODUCT DESCRIPTION

With strong demand for heavy-duty bulk conveyors in distribution and fulfillment centers, LogistiQ offers both bolted and welded conveyor constructions to suit a wide range of applications. These systems are available with medium- and heavy-duty drives, tail sections with dead-end pulleys, noseover and hitched transitions for incline and horizontal conveying, and intermediate conveyor bed sections with side and bottom covers in both slider-bed and roller-bed designs. Our structural tube supports simplify field installation with infinite elevation adjustment, while common accessories such as knee braces, transition plates, adjoining gravity roller conveyors, and spiral chutes ensure seamless system integration. We meet the specifications of many parcel belt end users and bring proven experience working with a wide range of belt manufacturers.

## ADDITIONAL FEATURES & BENEFITS

- Highly Customizable
- Premium Efficiency Motors
- Smooth Operation
- Reversible Incline/Decline
- Variable Speed
- Conveying Irregular Packages

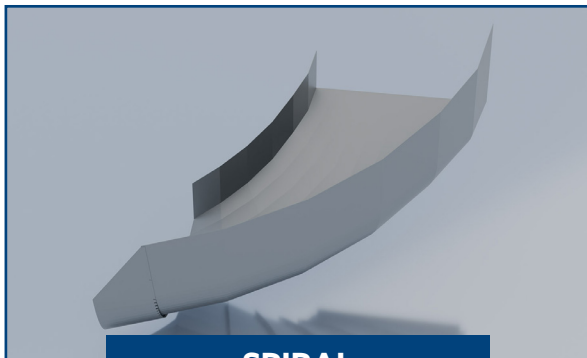
## WHAT IT CAN BE USED FOR

- Distribution & Fulfillment Centers
- Collection
- Sortation
- Inbound & Outbound
- Transportation

# PARCEL BELT CHUTES



**CONCAVE TIP**



**SPIRAL**



**SPIRAL TIP**

## PRODUCT DESCRIPTION

**WIDTHS:** Custom

**ELEVATIONS:** Custom

**SIDE GUARD:** Custom

**MATERIAL:** 12ga Galvanized with optional UHMW Liner.

**SUPPORTS:** Structural Tube Supports

**COUNTERWEIGHT:** Manual with locking

**OPTIONAL:** Chute Extension

**STANDARD WIDTHS:** 36" / 42" / 48" / 60"

**INNER RADIUS:** 30" - 36"

**IN-FEED-DISCHARGE:** 29.5" / 40.5a"

**STANDARD ANGLES:** 45° / 60° / 90°

**MATERIAL:** 12ga Galvanized with optional UHMW Liner.

**SUPPORTS:** Optional supports can be added if free standing.

**OPTIONAL:** Chute Extension

**STANDARD WIDTHS:** 36" / 42" / 48" / 60"

**TAPERED WIDTHS -**

- 60" infeed tapered down to 48" discharge
- 78" infeed tapered down to 60" discharge

**ELEVATIONS:** Custom

**SPIRAL ANGLES:** 45° / 60° / 90°

**MATERIAL:** 12ga Galvanized with optional UHMW Liner.

**SUPPORTS:** Structural Tube Supports

**COUNTERWEIGHT:** Manual with locking

**OPTIONAL:** Chute Extension

## APPLICATION SPECIFIC

These are just a few of our Chute options that we offer. No two system solutions are exactly alike, which means many Chute solutions are application specific.

# PARCEL BELT PLATFORMS



**SORT / OPERATOR**

## PRODUCT DESCRIPTION

**MAX WIDTH:** 144"

**MAX LENGTH:** 240"

**STAIRCASE:** Available

**HANDRAIL:** 2-top or 3-top available

**GRATING:** 19w4 Bar

**CONVEYOR ACCESS STEP:** Available

**ACCESS LADDER & EXTENSION RAIL:** Available

**MAINTENANCE & SHIP LADDERS:** Available

**CONSTRUCTION:** Welded

**SUPPORTS:** Structural Tube Supports



**MAINTENANCE**

**WIDTHS / LENGTHS / ELEVATIONS:** Custom

**STAIRCASES:** Available

**HANDRAIL:** 2-top or 3-top Available

**TOE PLATE:** Available

**SHIP LADDERS:** Available

**TREAD PLATE STRIPS:** Available

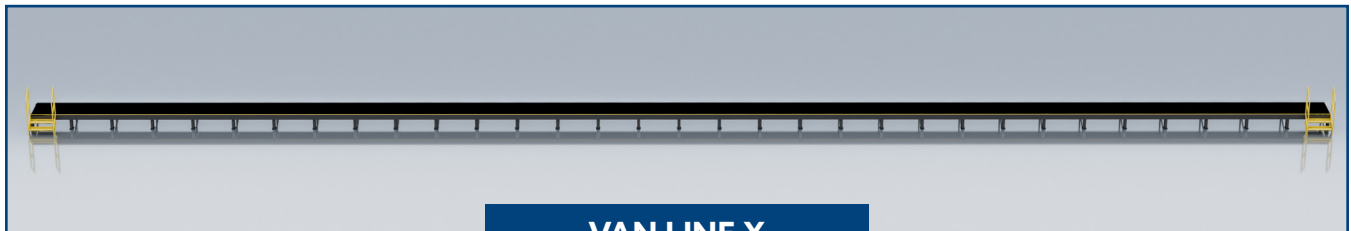
**TRUCK BUMPERS:** Available

**SUPPORT REINFORCEMENT:** Available

**CONSTRUCTION:** Welded

**GRATING:** 19w4 Bar / Replaceable with Tread Plate

**SUPPORTS:** Structural Angle Supports



**VAN LINE X**

**STANDARD ELEVATIONS:** 24"

**WIDTHS / LENGTHS / ELEVATIONS:** Custom

**STAIRCASES:** Available

**HANDRAIL:** Available

**GRATING:** 19w4 Bar / Replaceable with smooth reinforced steel channels for unloader tracks.

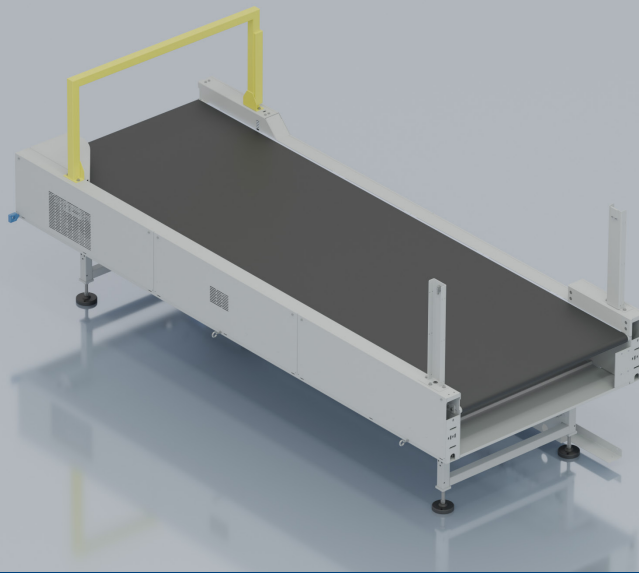
**CONSTRUCTION:** Welded

**FINISH:** Powder

**SUPPORTS:** Heavy-Duty

**STRUCTURAL BUMPERS:** Heavy-Duty

**NOSING:** Safety Yellow



# STREAMLINE+

ENSURE EVERY PACKAGE IS SORTATION-READY

## SPECIFICATIONS

**WIDTH:** 48"

**LENGTH:** 9' or 12'

**MOTOR:** 2HP

**SPEED:** 800 FPM max

**ELEVATION:** 32"

**GUARDRAIL:** Integrated at 4" in height

**APPLICATION USE:** Configurable for right-hand or left-hand operations

## PRODUCT DESCRIPTION

The StreamLine+ is a precision belt conveyor that helps operators manage exceptions in high-throughput singulation. While upstream singulators align 99% of packages into single-file flow, StreamLine+ allows operators to manually correct the remaining 1%, such as overlaps or side-by-side placements, before packages move to downstream gapping, scanning, and sortation.

Equipped with over-height sensors, StreamLine+ continuously monitors incoming packages and can automatically stop the flow to prevent crash-bar contact, protecting both the system and operators. Optional discharge-end guides funnel packages onto narrower conveyors to maintain consistent flow and reduce bottlenecks.

By combining automated singulation with targeted human oversight, StreamLine+ ensures packages are properly prepared for sortation, improving overall accuracy, efficiency, and reliability.

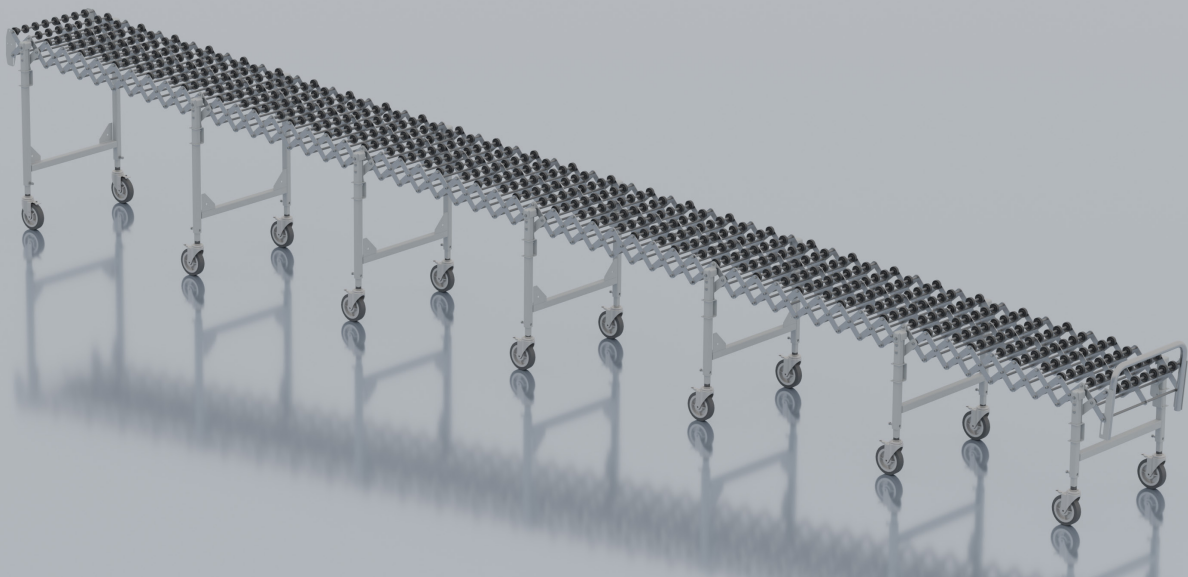
## ADDITIONAL FEATURES & BENEFITS

- Uses nose rollers at transitions
- Ships fully assembled
- Uses timing belt drive system
- VFD Speed Control System
- Spring Take Up

## WHAT IT CAN BE USED FOR

- Singulation

\* The design and technology of this product are the proprietary property of LogistiQ and may be covered by one or more patents or pending patent applications.



# SKATE WHEEL FLEX

EXTENDS, CONTRACTS, & FLEXES FOR PRODUCT LOADING & UNLOADING

## SPECIFICATIONS

**WIDTH:** 18", 24", 30"

**LENGTH:** Sections shipped in approximately 3' increments, ranging from 12' to 40'

**HEIGHT:** 28" to 44"

**SPEED:** N/A, Uses gravity

**AXLE SPACING:** 3", 4", 5", 5.25"

**HORIZONTAL LAYOUT:** Packages pushed onto conveyor

**PITCHED LAYOUT (DECLINES FROM**

**INDUCT TO DISCHARGE):** Uses gravity to move packages

**WHEEL TYPES:** HDPE (High-Density Polyethylene), Steel

**BALL SIZE:** 1" Zinc plated, carbon steel balls

## PRODUCT DESCRIPTION

The Flexible Skate Wheel conveyor is portable, expands, contracts, and flexes around building structures and other equipment. It aids in transporting products between conveying equipment. The adequately spaced skate wheels on the axles help track and keep packages within the conveyor bed. Increases efficiency in package handling in hard to automate sections.

## ADDITIONAL FEATURES & BENEFITS

- Expands, contracts, and telescoping legs adjust to fit available floor space and match conveying height.
- Connecting hooks allow for connecting to other conveying equipment.
- Package stop on one end to halt packages.
- Available pitch decline uses gravity to move packages.
- Self-tracking, durable plastic skate wheels navigate curves, can be nested for higher density, and require no power.
- Retractable and wheeled for compact storage and easy mobility anywhere in the warehouse.
- Gravity, no power required.

## WHAT IT CAN BE USED FOR

- Loading and Unloading docks
- Moving packages in manual sort areas
- Assembly lines
- Receiving, Packaging, and Shipping Areas



# ACTIVEROLL

AUTOMATICALLY DIVERTS PARCELS USING ACTIVATED ROLLER

## SPECIFICATIONS

**LENGTH:** Determined by the sorting/diverting length

**WIDTH:** 24in to 48in

**DIVERTING ANGLE:** 30 deg to 45 deg

**CONVEYOR SPEED:** Up to 150 ft/min

**ELEVATION:** Same elevation as main conveyor

**CONTROLS:** PLC or zone controller integration

**MOTOR:** Belt-driven wheel cassette

**POWER:** 90 VDC, supplies up to 16 motors

**MTBH:** Smalls, cartons, totes, trays

## PRODUCT DESCRIPTION

The LogistiQ ActiveRoll is an automated diverting solution designed to redirect products from a main conveyor line to a Runout or takeaway conveyor. Angled wheels rotate at a higher speed than the overall roller, allowing packages to be smoothly guided to their designated destination.

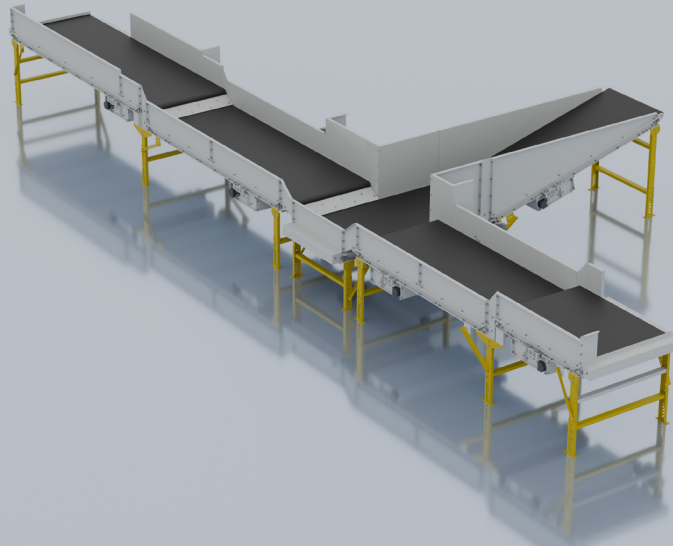
The activated roller operates in conjunction with a barcode scanning camera system that identifies and routes packages. As each package travels along the main conveyor, the camera scans the package label and sends the barcode data to the control system. Based on this information, the control logic determines whether the package should continue along the main line or be diverted to the appropriate destination.

## ADDITIONAL FEATURES & BENEFITS

- Smooth, controlled diverting reduces product impact
- High divert accuracy
- Diverter conveyor design fits easily into existing conveyor layouts
- Easy installation and roller replacement

## WHAT IT CAN BE USED FOR

- Sorting parcels to multiple destinations
- Fulfillment and distribution centers
- E-commerce and parcel handling systems
- Automated material handling systems
- High speed diverts



# MODFLOW

HANDLES SINGULATED FLOW FROM INBOUND TO SORTATION AND TRANSPORT TO OUTBOUND

## SPECIFICATIONS

**TYPICAL WIDTHS:** 30", 36", 40", 42", 48", 60"  
Multiple transition types available: flat to flat, overlapping, decline to flat, & flat to incline.

**MAX LENGTH:** 170' with standard drive design

**MOTOR SIZES:** 1hp, 3hp, & 5hp

**SPEEDS:** 80fpm or lower up to 650+fpm

**POWER:** 480 V at 60hz

## PRODUCT DESCRIPTION

This medium-duty belted conveyor can be used to transport parcels, trays, totes, etc. in almost any application. Typically, it's used to handle singulated flow from inbound areas all the way through infeed to high-speed sorters and outbound to runout lanes or trailer loaders. Built-in safety features allow operators to work nearby when necessary. The design of the conveyor focuses on modularity and flexibility which allows multiple drive mounting positions, support locations and a wide range of speeds widths and live load ratings available.

## ADDITIONAL FEATURES & BENEFITS

- Screw takeup for precision tensioning
- 3" End pulleys and tapered frame for optimizing infeed and outfeed transitions
- Guardrail designed to eliminate transition gaps and catchpoints
- Modular design allows for flexibility and customization
- Dead-end pulleys are standard

## WHAT IT CAN BE USED FOR

- Transport of singulated parcels, totes, trays, smalls
- Infeed lines interfacing with operators
- High speed feeds into sorters
- Bulk smalls transport



# LOGISTIQ INTEGRATION SOLUTIONS

## FULL SERVICE INTEGRATION & AFTERMARKET SERVICES

**120+**  
YEARS OF  
EXPERIENCE

At LogistiQ, we are excited to be your go-to source for material handling solutions and we're committed to keeping your operations running smoothly. We offer not only turnkey solutions, but also turnkey service processes for after-sales that include permitting, site surveys, installation, preventive maintenance audits, routine maintenance and then once live, if you elect, 24/7 Technical Support and after-hours service across the country.

**24/7**  
SUPPORT

We are fully equipped with an implementation crew that gets your system up and running exactly to your expectations. This is thanks to our design, systems, and electrical engineering teams crafting our products in a way that our experienced Field Execution team can easily deploy at each site.

**150+**  
FIELD EXECUTION  
PERSONNEL

With deep industry knowledge, not only can we expertly service our systems and products, but we also have the ability to service other companies' equipment as well. Our technicians are talented both mechanically and electronically, so they can take care of any issue at hand. Our spare parts programs can have you prepared in advance for anything that may arise. Upon installation we can leave you with a kit of spare parts for your system for rapid replacement, or for those that are routinely replaced so they are on hand when our technician arrives for your service call.

SYSTEM  
INTEGRATION

RETROFITS

24/7 PHONE AND  
FIELD SUPPORT

ON-SITE SYSTEM  
ASSESSMENTS

PREVENTATIVE  
MAINTENANCE

LogistiQ puts their customers first. In order to do so, we must prepare our team to be the best they can be to adequately service those who have purchased one of our solutions or contract system care with us. We invest in top-of-the-line tooling for each of our Field Execution team members so they know that they have equipment they can count on. Continued education is something we highly value. Not only do we offer electrical and mechanical training, but we offer them both internally at LogistiQ and externally as well. Along with this comes training and upholding some of the highest levels of safety standards within the industry which includes our own internal compliance and audit team within the field.

Over recent years, we have built a large team of conveyance experts. This has allowed us to offer both accelerated services and system installations when time has allowed. An example of this, also in the form of a green initiative, is when we have taken decommissioned equipment from older sites, placed it back into our inventory for storage and then have reworked components as needed and used it to help sites get back up and running after natural disasters have occurred. This allows them to operate to a certain level of efficiency until they can rebuild their site and request a new system tailored to their facility needs.

